

EIGHTH ANNUAL
Bull Sale



APRIL 6, 2024 / 1:00PM

65 BULLS & 16 REGISTERED YEARLING OPEN HEIFERS TO SELL



HOULD ANGUS

CATTLE WITH MATERNAL PERFORMANCE.
GENETICS WITH MATERNAL INTEGRITY.

Join us at the ranch for the pre-sale lunch and live auction.

► www.houldangus.com ◀

HELLO TO ALL OF YOU ANGUS ENTHUSIASTS

We would like to welcome you all to our 8th Annual Hould Angus, live auction bull sale on April 6, 2024 at the Hould Angus Ranch South of Havre, MT.

Well here we are again, making our way into calving season or maybe just wrapping it up. Either way, what an exciting time we are heading into in the cattle business. With great fall moisture and actually a pretty good amount of wet snow throughout winter. I think we have a great chance at an honest start to summer. I have to say again this year that we are very thankful for the cows that we have designed to work for us here. They worked their tails off for us this year and we lost a few of them to fertility, that seems to be a huge hurdle these last few years around the country. Since 2020 we have had to cull down every fall because of drought and we are now awaiting a good year to see the results of our culling process. To see how these cows respond to just a normal year of moisture and temperatures will be exciting to watch. As you can tell, I'm very optimistic about our year and the prosperity we will all have in the cattle business. I'm also confident that our bulls in this year's sale will help take back control of those deficits in many of the herds around that are suffering from fertility and doability in their cow herds. I just think it's time to buy from breeders that feed and breed like you do. From breeders that don't have inputs that are far greater than your ranch and environment can produce or afford to buy. If you're looking for a seedstock supplier that grazes out almost 300 days a year and is putting pressure on his cows to make it much longer; a seedstock supplier who doesn't play games with EPD's; a seedstock supplier who believes in solid proven genetics, look no further. We produce cattle with Maternal Performance backed by Genetics with Maternal Integrity.

J Bob and Ruby Hould Family



OUR CATTLE

For the last 24 years at Hould Angus we have turned against the mainstream hype of great arithmetic behind each cow. Rather, we have developed a herd of cattle that will survive and excel in our environment by using maternal genetics with maternal integrity.

What is Maternal Integrity? Take a look into Angus Journals and stud books from the last decade and you will see the ridiculous amount of bulls promoted to everyone as the future maternal giant of the breed (because of great arithmetic). Then, look at how many of those greats have completely fallen on their faces, only to leave commercial producers high and dry. We have done our due diligence and driven countless miles to physically evaluate daughters of the sires that we use at Hould Angus. This is one of many things numbers can't evaluate but your eye can. With this philosophy and a lot of patience, we hold out and let the dust settle before we utilize the sires in our program.

We believe that it is time for the maternal Angus cow to make a comeback. With fads and trends of mainstream Angus breeders and AI studs, it has become very evident that the high EPD cattle are not designed for an environment that requires them to be self-sufficient and last well into their teens in production. Is there a place for these cattle? Yes, I definitely believe so. But is it in a ranch scenario that requires cattle to be moderate in size (4.5-5.0 frame), deep bodied, extremely easy keeping and fertile? All of this without a heavy supplement? NO! I don't believe it to be possible to achieve in volume.

We are not anti EPD or DNA but stand on the side of caution with our desire to utilize them as a true breeding tool. With AAA playing with the numbers on a weekly basis, it makes it very hard for us to rely on them as much as many breeders do. To each their own, but we will choose to carry on as we have for now.

BULL OFFERING

Our bull offering this year is again very heavily influenced by OCC and the old N-Bar Emulation bloodlines. Crossing these two lines has produced females that are very functional in their design, with tidy udders and extreme fertility. We consider our cow herd to be moderate in size and very capable of maintaining themselves in great shape even through some very tough conditions. With all that being said, we firmly believe that our bull mates to these cows should offer the same attributes to change your herd towards these functional traits and/or for our long time customers to maintain the type that has brought them back to Hould Angus.

HEIFER AND BRED COW PLACEMENT

Each year we are getting more and more interest in our style and type of cattle. If you have females for sale of any class and they are out of and/or bred to Hould Angus bulls, or suitable like genetics, we would like to know about them. The demand is great and the availability to acquire low input moderate framed females is rather low. Please contact us in the future and we will certainly give you a hand in buying or selling your cattle.



JBob and Ruby Hould with granddaughter, Hadley.



*Tyler, Kaylee,
Hadley and Harper.*



Jessy and Eddie.

TRAVEL INFORMATION

ACCOMODATIONS

Best Western Plus, Havre Inn & Suites

1425 US Highway 2, Havre MT
406-265-2888
www.bestwestern.com

Best Western Plus, Great Northern Inn

1345 1st Street, Havre MT
406-265-4200
www.bestwestern.com

AmericInn by Wyndham

2520 US Highway 2, Havre MT
406-668-1487
www.wyndhamhotels.com

AIRPORT

Havre Airport

Services include aviation fuel, aircraft parking, pilot supplies, courtesy cars (free for pilots to use in the local area), and restrooms.

Commercial service is provided by Cape Air,
www.capeair.com.

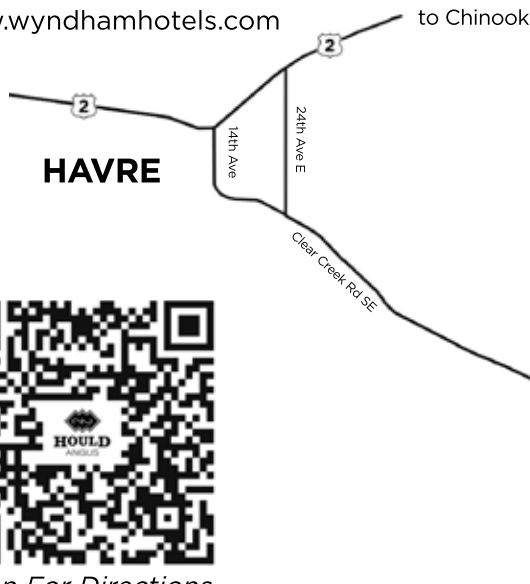
Great Falls International Airport

Located 143.6 miles SW of Havre.
www.flygtf.com

GETTING TO THE RANCH

Hould Angus Ranch is located at 58921 Davey Road in Havre, Montana.

From Havre, travel 1.8 miles on 14th Ave.
Stay straight on Clear Creek Rd (gravel) 5.0 miles.
Turn left on Davey Road SE, travel 2.1 miles.
Turn right, 1 mile into ranch.



Scan For Directions

FRONTIER LIVE SALE CATTLE AUCTIONS

This sale will be broadcast live on www.fronterlivesale.com. To view the sale:

1. Create an account, if you have already done so, skip to the step three.
2. To create a new account, click on the word **Registration** in the upper right hand corner. You must fill out the information requested. Then click **Create Account**. An email will be sent to the email you provided. Please click the link in the email to activate your new account. Once you click the link, your account will be activated.
3. Once your account is activated, you may click **Continue To Browse Our Site**. This will allow you to view all upcoming auctions.
4. Once you find the **Hould Angus** auction, click **Get Approved To Bid** for absentee and live bidding.
5. Please enter your information in the form. Depending on the auctioneer, different information may be requested. Click **I agree to sale terms and conditions**. Congratulations! You are now approved for the Hould Angus auction.
6. Login on sale day with the credentials provided at registration.



Call 866-313-0123 for tech help.

HOULD ANGUS SALE INFORMATION

VIEW THE BULLS

Bulls can be viewed at Hould Feedlot in Malta, MT up to the week prior to the sale. During the week of the sale, bulls can be viewed at Hould Angus Ranch.

SALE PERSONNEL

Kyle Shobe, Auctioneer, 406-366-0472
Matt Wznick, Western Ag Reporter, 406-489-2414
Wrye Williams, Tri-State Livestock, 406-938-3071
Dwain Hould, Special Sales Rep, 406-321-4517

SALE VIDEOS

Videos will be available for viewing at frontierlivesale.com, houldangus.com and on the Hould Angus facebook page.

SALE DAY PHONES

Sale Barn 406-395-4441 or 406-395-4465
Kyle Shobe 406-366-0472
Matt Wznick 406-489-2414
JBob Hould 406-808-2265
Dwain Hould 406-321-4517

SALE DAY CONFERENCE LINE

Hould Angus will provide a conference call line for bidding on sale day. Anyone is welcome to use this line but must first call one of the following people to get a Conference Line PIN Number and Buyer Number. **Please do this prior to sale day.**

JBob Hould 406-808-2265 or 406-395-4441
Dwain Hould 406-321-4517
Scott Fraser 406-860-6548
Sam Fraser 406-860-0590

CONFERENCE LINE: 406-998-1109

TERMS & CONDITIONS

All cattle must be paid for in full on sale day or as otherwise arranged prior to the sale.

LIABILITY DISCLAIMER

All persons that attend the sale do so at their own risk and the owners or anyone associated or connected with this sale assume no liabilities for any accidents that may occur.

DELIVERY

Bulls will be delivered free of charge up to 500 miles to central points. Beyond that will be at cost. Delivery of bulls will begin mid-April. All bulls will be freeze branded by Derek Dukart prior to delivery. Female delivery is the responsibility of the buyer. Hould Angus will assist in the line up of trucking.

SEMEN TESTING

All bulls will be semen tested by Chinook Veterinary Clinic before delivery.

HEALTH/VACCINE

7 Way/50M: Twice	Enforce III
Mycoplasma : Twice	Pyramid 5
Fusogard (Footrot): Twice	Ino-pour
Type A Colostridial: Twice	Sabre (Lice)
Safeguard (dewormer) in the ration	Clean-up II (Lice)

RETAINED INTEREST

We retain 1/3 semen interest in all bulls selling unless otherwise stated in catalog or from the block. The 1/3 semen interest is a semen revenue sharing interest only with 100% of the bull's salvage value belonging to the buyer. All collections will be done at the expense of Hould Angus and at the convenience of the buyer. Please contact us if you have questions.

BREEDING GUARANTEE

All bulls are guaranteed breeders and our guarantee is simple, we stand behind the genetics and breeding soundness of our bulls 100% for the first breeding season. If a genetic issue surfaces or if the bull is unable to settle cows, you will get either full credit or a replacement bull if available. If a management issue or act of God occurs, we will stand by 50% of the risk. Simply notify us by September 15, 2024 to receive your credit, less any salvage value. Livestock Insurance will be available and is recommended for purchases over \$7,000.

Stockmans Insurance Agency LLC
Livestock Insurer
Licensed
Since 1989
Coverage
Mortality, Loss of Use

For more information and rates, contact Bill Pelton

"We partner with you to provide the protection you want and need."

Pelton Livestock
Marketing & Consulting

406.671.5100 bill@billpelton.com www.BILLPELTON.com

REFERENCE SIREs



JBob Emulation 767 AAA 19042121

Emulation 31
Emulation N Bar 5522
Ankony 8F78 Lass 8F275

O C C Anchor 771

Hould Juanada 9021
Cole Creek 104 Juanada 8M

F C R Elation Lad 652
Miss Emulous 243

Ankonian Dynamo 27542
Ankony B999 Lass 26832

D H D Traveler 6807
O C C Juanada 709V

C H Quantum 3330
Cole Creek 104 Juanada 1256

CED	BW	WW	YW	MILK	\$EN
+12	-1.6	+51	+83	+20	+5

As most of my longtime friends and customers know, I am a huge fan of Emulation 5522 and OCC Anchor. Both have proven themselves to produce daughters that are the most range adaptable females I have ever had around. To stack those super bulls on top of Juanada gives this bull the credentials to be one of the best cow making bulls to ever be born here. His oldest daughters are coming 5 now and they are exactly what I wanted them to be. They have that range cow look with udders that have the look as they will last. 767 is a bull that works very well on OCC type cows here. He gives them a feminine front and a little stretch without sacrificing type and function. 767 is an outstanding individual. Oh, and did I mention his mother is Awesome and is also the mother of Genetic Rustler 440.

O C C Hunter 928H AAA 13354639

Basin Rainmaker 654X
O C C Focus 813F
Dixie Erica of C H 1019

O C C Anchor 771A

O C C Dixie Erica 960E
Dixie Erica of R R 4345

Basin Rainmaker D S 380U
Basin Bardolene 423U

PBC 707 1M F0203
Dixie Erica of C H 615

D H D Traveler 6807
O C C Juanada 709V

Shoshone Vantage JB23
Dixie Erica of R R 9275

CED	BW	WW	YW	MILK	\$EN
+11	-.4	+48	+73	+24	+11



It's pretty hard not to really like the type of animal this bull produces. His calves did very well to weaning and took off on feed to yearling. He will produce cattle that are a little bit bigger outlined than some of the OCC blood lines we have used in the past. But they still have that fantastic phenotype we like. Hunter and Legacy have the same mother and may be a large part of the equation as we really like our Legacy cattle as well. It was early 2000's when I first got to see the first Hunter cows and bulls popping up around in my travels. I knew I needed to use him very hard at some point and glad I did. He will be used for several more years to come. An outstanding offering this year.

CFC Fusion MT1 AAA 19582587

O C C Emblazon 854E
O C C Tremendous 619T
O C C Dixie Erica 960E

Leachman Right Time
Miss Wix 2022 HC Mc Cumber
Miss Wix 7111 of Mc Cumber

D H D Traveler 6807
Dixie Erica of C H 1019

O C C Anchor 771A
O C C Dixie Erica 907C

N Bar Emulation EXT
Leachman Erica 0025

G D A R Traveler 71
Miss Wix 365 of Mc Cumber

CED	BW	WW	YW	MILK	\$EN
+16	-2.8	+54	+88	+33	-6



Fusion has proven to be an excellent addition to our herd battery. He is a OCC Tremendous son out of the Miss Wix 2022 cow. Which makes him a half brother to our Cornerstone bull and a full brother to McCumber Tremendous 2008 who resides in the Redland herd. Fusion is very correct with length, style and muscle to spare.

O C C Freightcar 655F AAA 19698281

- O C C Hunter 928H
- GCC Hunter 649U**
- O C C Juanada 862M
- O C C Jet Stream 825J
- O C C Dixie Erica 805Y**
- O C C Dixie Erica 607P
- O C C Focus 813F
- O C C Dixie Erica 960E
- O C C Homer 650H
- O C C Juanada 914K
- O C C Emblazon 854E
- O C C Juanada 968G
- O C C Headliner 661H
- O C C Dixie Erica 816B

CED	BW	WW	YW	MILK	\$EN
+12	-.7	+24	+44	+26	+15



We purchased Freightcar to bring in OCC Hunter. He was a very impressive phenotype and as stout as you would ever want. Stacked with a female line that never ends and so we knew he was the one we needed to bring on board. He has not disappointed us at all in his ability to calve easily and produce calves that are extremely easy fleshing and very moderate in size. You can tell by his photo that he is definitely all there.

Sinclair Emulation 5522 XP AAA 15696693

- Emulation 31
- Emulation N Bar 5522**
- Ankony 8F78 Lass 8F275
- N Bar Emulation EXT
- N Bar Primrose Y3051**
- MS Polo Peak 1148 5970 M
- F C R Elation Lad 652
- Miss Emulous 243
- Ankonian Dynamo 27542
- Ankony B999 Lass 26832
- Emulation N Bar 5522
- N Bar Primrose 2424
- Nichols Trademark S1
- Primrose N Bar 9962

CED	BW	WW	YW	MILK	\$EN
+3	+1.3	+39	+66	+17	+12



If you have followed our program you know how much we cherish our N-Bar Emulation 5522 daughters. They are one of the most range adaptable cattle we have ever been around. Once they hit maturity I would say that they flesh as easily as any sire we have used. We decided to use XP in 2015 and very thankful we did. We have 16 daughters of Emulation 5522 XP in production. They have an average ratio of 106 on their calves. Not to mention another 6 to calve this year and 10 to bred this spring. If you have used a lot of our OCC bred genetics and feel it's time to make a genetic shift on a generation. This is a bull that will no doubt work for you.

OCC Jetstream 825J AAA 13635095

- D H D Traveler 6807
- O C C Emblazon 854E**
- Dixie Erica of C H 101
- O C C Eureka 865E
- O C C Juanada 968G**
- O C C Juanada 774A
- Q A S Traveler 23-4
- Bemindful Maid D H D 0807
- PBC 707 1M F0203
- Dixie Erica of C H 615
- O C C Backstop 888B
- Blackbird of R R 1204
- D H D Traveler 6807
- O C C Heros Juanada 700Y

CED	BW	WW	YW	MILK	\$EN
+8	+1.5	+39	+63	+21	+20



We started using Jetstream In 2013 and have had really great luck with his daughters. The oldest ones are now 10 years old and we have only lost one of them now to fertile or functional issues. They just make great range cows and cross very well with Emulation genetics. His mother O C C Juanada 968G is considered by most one of Tim and Trudy's best cows. I would say that he is a very close second to Anchor as being the best OCC bred bull that we have used to date for making range adaptable cows. Jetstream semen is in very short supply and so take advantage of the opportunity to get them now.

OCC Freedom 801F AAA 20335833

- C C Practical 841P
- C C Wholesome 667W**
- C C Juanada 664R
- C C Practical 841P
- C C Dixie Erica 628W**
- Chloe Dixie Erica 7313
- C C Focus 813F
- C C Juanada 968G
- C C Emblazon 854E
- C C Juanada 775C
- C C Focus 813F
- C C Juanada 968G
- Papa Forte 1921
- C C Dixie Erica 826J



CED	BW	WW	YW	MILK	\$EN
+16	-3.9	+39	+64	+20	+19

Freedom is an elite calving ease to growth sire. His calves come very easily and by the time weaning comes along they are very heavy. Freedom is a natural calf out of 628W and she is also the mother of OCC Zodiac, OCC Blue Print and OCC Confidence who are all big time herd bulls for Tim and Trudy. He is also double bred Practical and O C C Juanada 968G the mother of Jetstream. This bull is incredibly bred and his calves are outstanding. Now for the story.

I got a call from Tim Ohlde one day and he wanted to know if I would be interested in a bull. I needed a bull and so I asked what was the bull he wanted to sell me. I about dropped over backwards when I seen his pedigree. I immediately said yes and he immediately shipped him to Montana. Freedom showed up and I was a little taken back by his appearance. He was not what I thought he would be in appearance and Tim had warned me about it. I had Wyatt take a picture of him as a stud just a few days after I got him to Montana and that is the picture shown. Freedom bred like a machine that summer and I thought I had better get him insured. I had a breeding exam done on him and it showed that Freedom had major lung damage at some point and probably as a calf. That is the exact reason why he looks the way he does. If it wasn't for that I don't believe he would be walking in my pasture. I have to thank Tim and Trudy for giving me the opportunity to own such a great breeding bull.

O C C Confidence 820C AAA 18994618

- C C Rear End 751R
- C C Big Time 746Z**
- C C Dixie Erica 771R
- C C Practical 841
- C C Dixie Erica 628W**
- Chloe Dixie Erica 7313
- Q A S Traveler 23-4
- FCC Revolution Rose 995N
- C C Missing Link 830M
- C C Dixie Erica 776M
- C C Focus 813F
- C C Juanada 968G
- Papa Forte 1921
- C C Dixie Erica 826J



CED	BW	WW	YW	MILK	\$EN
+5	+1.1	+44	+77	+16	+15

Confidence is a OCC Big Time son out of 628W who is the mother to OCC Zodiac, OCC Blue Print and our herd sire OCC Freedom. We have had great luck with Big Time and Cortez and Tim recommended that I try him out. He did not disappoint. The bulls are stout and the females are feminine and deep. He has the same phenotype as Big Time and Cortez with a little less birth weight. Time will tell but you will have no trouble finding the Confidence bulls come sale day.

O C C Moderator 825M AAA 14456398

- C C Emblazon 854E
- C C Headliner 661H**
- C C Juanada 858F
- C C Emblazon 854E
- C C Dixie Erica 845K**
- C C Dixie Erica 960H
- D H D Traveler 6807
- Dixie Erica of C H 101
- Basin Rainmaker 654X
- C C Juanada 709V
- D H D Traveler 6807
- Dixie Erica of C H 1019
- C C Anchor 771A
- C C Dixie Erica 907C



CED	BW	WW	YW	MILK	\$EN
+12	-1.3	+30	+50	+22	+20

A great addition to our program. He sires stout bulls that have a lot of spring of rib and fleshing ability. His daughters are neat uddered and very productive and fancy. This flush of Moderator bulls is an excellent opportunity to get a set of heifers that will last you well into their teens.

Shoshone PP 7105 AAA 10393619

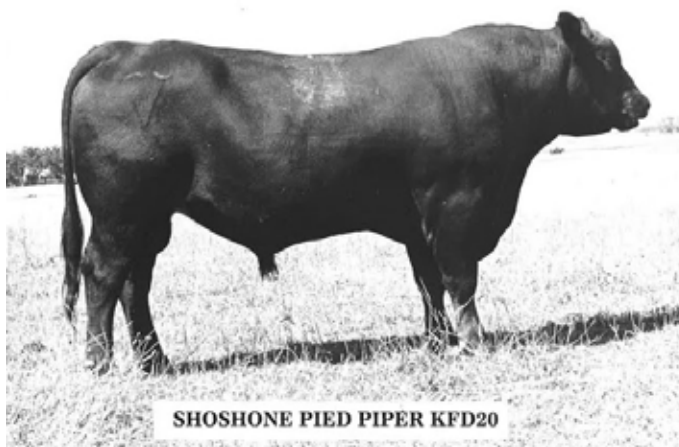
Rito 707 of Ideal 533 70 R R Rito 707
 Skymere of Ideal 312
Shoshone Pied Piper K F D 20
 Shoshone Fran Eileen FD20 Franchester of Wye
 Shoshone Eileen D20
 Shoshone Viking GD60
 Shoshone Beauigan Jgeca 27 Shoshone Barbara G E C A 27
Shoshone Margaret LJD71
 Shoshone Margaret JD71 Qualton of Wye
 Shoshone Margaret D71

CED	BW	WW	YW	MILK	\$EN
-1	+2.4	+27	+41	+31	+10

PP was originally purchased from Larry by Tom Walling of Winifred Montana. Tom had a herd of cattle that was very undervalued in my opinion. One great example of PP 7105 was the success that Clarence and Lee VanDyke had with his daughter who started their entire lass cow family. A pretty good stroke of business there. At some point the Wallings sold off a large group of cows to Crowfoot Cattle Company in Canada. Many of which were daughters or granddaughters of the PP bull. Once they got to Canada they where bred to several OCC bred bulls and the offspring where outstanding. Almost every person I talk to from Canada has nothing but admiration for the Crowfoot program and all have stated that the PP x OCC cross was dynamite. Take advantage of this opportunity because I believe that this unit of Shoshone PP 7105 was the last unit in existence.



CROWFOOT EQUATION 5793R
 A great example of the OCC x Shoshone PP 7105 combination that had done so well for Crowfoot and other Canadian breeders.



SIRE OF SHOSHONE PP 7105

Horse Butte 1126 of 3128 AAA 14050489

Shoshone Bob 2712 Q A S Traveler 23-4
Shoshone Encore 6310 FCC Revolution Rose 995N
 Shoshone Frances MHE63-93 O C C Missing Link 830M
 O C C Dixie Erica 776M
 Shoshone Encore 6310 O C C Focus 813F
Shoshone Ester 3128 O C C Juanada 968G
 Shoshone Ester 3116 Papa Forte 192
 O C C Dixie Erica 826J

CED	BW	WW	YW	MILK	\$EN
+4	+8	+28	+34	+9	+28

We are very fortunate to have acquired the semen on this bull. I have not seen many progeny in person but have been told by great cattlemen and friends that 1126 makes great functional females. He is a father daughter mating out of the great Shoshone Ester cow family. And that cow family is one of the many strong families that came out of the Shoshone herd. I was always told that 1126 was muscle and needed to be mated to milk and so that is why he was put on Juanada O228. This should make an absolutely stellar cross. Shoshone Ester X Juanada 1450. That's good stuff.



SHOSHONE ESTER 3116
 Granddam of Horse Butte 1126 of 3128

Back in 2002 I was fortunate enough to purchase a cow that would forever in her lifetime be a producer of excellence here. At the early age of 6, I realized this and began flushing her extensively to some truly foundation type bulls. Now, 21 years later, we have numerous daughters in the herd that have done an excellent job for us, many that have the same phenotype but far surpassed their mother in production. Juanada 1650 (13 yrs old), Juanada 0228 (14 yrs old) and Juanada 8104 are 3 of them that epitomize their mother in type and surpassed her in production.



COLE CREEK JUANADA 1450 (8M)



Juanada 8104

This flush of calves out of 8104 are quite possibly the greatest flush we have had to date. From top to bottom on the bull and heifer side the calves are outstanding. 8104 was a great cow that left us this fall at the age of 15. She was a picture perfect cow with a little larger outline and an impeccable udder. She came from another outstanding flush that produced 3 daughter out of EXT and Juanada 8M (1450). All of those full sisters have been productive and long lasting. 8104- 100 wr and 106 yr on her calves. 9150- 110 wr/105 yr on her calves. 2150-106 wr/106 yr on her calves. And a point of interest is the two remaining flush sisters to 8104 are still on the ranch and in production. 9150 is currently at ET center and 2150 will be headed there this spring. The point is that Juanada 8104 genetics and cow family have been very productive and long lived for us and these resulting ET brothers are bred to keep that tradition going. 8104 has 5 daughters that have been in production here and 4 that still remain in the herd. As well as 8 full sibs to the bulls that sell today that will be bred this spring.

8104 daughters include: 0202 - huge mistake selling her as a young cow to Wilbur Reid. 0202 is the mother behind many great cows and bulls selling today. **4313** - Full sister to the Jetstream bulls selling today. 103wr/110yr on all her calves. And the mother of our Herd sire JBob Chinook 603. 603 sold for \$13,000 to Ryan Neiman in our first sale. 603 has left Ryan and many others with some outstanding females that have that range cow look and productive. **6015** - sired by CAR Chinook 106wr/103yr and mother of one of the bulls we used last year as clean up. **0134** - Sired by Duff Homcho. 2/105 wr. **1804** - sired by her half brother classic. So Juanada 8m (1450) is the grandmother on both top and bottom. 105wr on her first calf by OCC Westward.



Juanada 0228

Hould Juanada 0228 is an outstanding N-Bar Emulation 31 daughter out of our matriarch donor Juanada 8M (1450). 0228 was a natural daughter of 1450 and was a standout from the beginning. We decided to finally flush her in 2022 at the age of 12 because of the strong daughters and the type that she produces. This is a super cow in my opinion. Phenotype to spare and can produce way over 50% of her body weight consistently. Even in her teen years.

Her daughters include: 4304 by OCC Jetstream who has a yearling bull in this sale. And has sold many top selling bulls for us and has a daughter 7223 that is the mother of one of the yearlings selling in the sale. Her production is 106 WR on her calves. **5031 by GDAR Traveler 9161** who has also sold several top end bulls for us with an outstanding production record of 101 WR on her calves. And 2 daughters that are climbing their way to the top.

0148-1044 are her youngest daughters by Classic and Solitude who have WR 102-107 respectively on their calves. And last but not least a OCC Remarkabull heifer that will calve any day to OCC Linebred. Exciting future for 0228 and her progeny.



Juanada 1650

Out of all of the females that Juanada 1450 made for us here. This flush of Emulation 5522 daughters are my favorite (1650-1750-1850). They are all very similar in phenotype, udder quality, fertility, production and function. But 1650 is my favorite and therefore I flushed her first. 1650 has a production record of 94/ BWR and 105/ WWR on all of her calves. She consistently produces light weight calves that turn it up and grow. She now has 14 daughters in the herd and they look like they will be the right kind. Several sons have made there way into registered herd and reports are very good. One in particular was purchased by Keith and Nikki Medalen and his first calves just sold and were in high demand. Congratulations to the Medalens.

I have now flushed all 3 of these sisters and have a huge bank of embryos stored for the future.

1**JBob Dominance 342**

TATTOO: 342 DOB: 03/26/23 AAA: 20863327

Emulation N Bar 5522

Emulation 31
Ankony 8F78 Lass 8F275**JBob Emulation 767**

Hould Juanada 9021

O C C Anchor 771A
Cole Creek 104 Juanada 8M

O C C Big Time 746Z

O C C Rear End 751R
O C C Dixie Erica 771R**Hould Juanada 8037**

Hould Juanada 2115

Jad Phylax W6157
Hould Juanada 0202

BIRTH WT	88
BIRTH RATIO	114
205 WT	700
WN RATIO	115

CED	BW	WW	YW	MILK	\$EN
-1	+3.3	+61	+101	+19	-6

Cow bull deluxe. This bulls mother(8037) is making her way right to the top of the herd. Every one of her daughters are big producers and are as easy fleshing as it gets here. This bull and many others in the sale are great examples of what 767 can do on OCC influenced genetics. Great potential here. 104/BWR-111WWR

**2****JBob Jetstream 326**

TATTOO: 326 DOB: 03/18/23 AAA: 20863352

O C C Emblazon 854E

D H D Traveler 6807
Dixie Erica of C H 1019**O C C Jet Stream 825J**

O C C Juanada 968G

O C C Eureka 865E
O C C Juanada 774A

N Bar Emulation EXT

Emulation N Bar 5522
N Bar Primrose 2424**JJJ Juanada 8104**

Cole Creek 104 Juanada 8M

C H Quantum 3330
Cole Creek 104 Juanada 1256

BIRTH WT	85
BIRTH RATIO	100
205 WT	707
WN RATIO	100

CED	BW	WW	YW	MILK	\$EN
+8	+0.6	+40	+70	+23	+14

Jetstream has done a superb job for us in the past and this mating has proven to be packed full of performance. These flush brothers have a full sister that is 10 years old this year and has proven herself to be an elite Angus cow for us. We have several full sisters to these brothers that we will bred this spring. These flush brothers out of 8104 by Jetstream and Moderator are possibly the best flush to date here. Excellent opportunity. 50% interest and possession with this bull. 99/BWR-100/WWR. **Refer to page 9.**

**3****JBob Moderator 332**

TATTOO: 332 DOB: 03/22/23 AAA: 20863344

O C C Headliner 661H

O C C Emblazon 854E
O C C Juanada 858F**O C C Moderator 825M**

O C C Dixie Erica 845K

O C C Emblazon 854E
O C C Dixie Erica 960H

N Bar Emulation EXT

Emulation N Bar 5522
N Bar Primrose 2424**JJJ Juanada 8104**

Cole Creek 104 Juanada 8M

C H Quantum 3330
Cole Creek 104 Juanada 1256

BIRTH WT	74
BIRTH RATIO	100
205 WT	734
WN RATIO	100

CED	BW	WW	YW	MILK	\$EN
+10	-0.4	+35	+63	+23	+15

Stout and wide is an accurate appraisal of this set of flush brothers. There isn't much difference in type between the whole flush. I retained one of the flush mates to these bulls. That should tell you enough. Unfortunately I only got one heifer mate to this set of flush brothers but she is awesome. 99/BWR-100/WWR **Refer to page 9.**



4**JBob Confidence 330**

TATTOO: 330 DOB: 03/20/23 AAA: 20863335

O C C Big Time 746Z O C C Rear End 751R
 O C C Dixie Erica 628W O C C Dixie Erica 771R

O C C Confidence 820C

O C C Practical 841P O C C Anchor 771A
 Chloe Dixie Erica 7313 Blackbird of R R 1204

O C C Emblem 909E

Broken Arrow Juanada 7176B

Cole Creek Juanada 594 Cole Creek Black Cedar 1100
 Cole Creek Juanada 56T

BIRTH WT	80
BIRTH RATIO	104
205 WT	640
WN RATIO	105

CED	BW	WW	YW	MILK	\$EN
+6	+1	+39	+64	+19	+20

This bull is a HOSS! Power and massive spring of rib here. His mom came to us from Travis Krein who has told me forever about OCC Emblem. So when the opportunity came around to buy this outstanding cow I took the chance. Dang glad I did. Lots of potential here. 101/BWR-99/WWR

**5****JBob Unbelievable 309**

TATTOO: 309 DOB: 03/10/23 AAA: 20863350

O C C Practical 841P O C C Focus 813F
 O C C Pollyanna 944H O C C Juanada 968G

O C C Unbelievable 851U

O C C Anchor 771A O C C Pollyanna 979F
 Basin Rainmaker F156 Basin Rainmaker 654X
 Basin Pamella 676X

NCC Blackbird 503

O C C Blackbird 736K O C C Great Plains 943G
 O C C Blackbird 824G

BIRTH WT	78
BIRTH RATIO	101
205 WT	601
WN RATIO	98

CED	BW	WW	YW	MILK	\$EN
+9	-0.7	+30	+54	+24	+19

Heifer Bull: Superior pedigree on this bull with a cow family that has done a great job for us. Productive and fertile cows. I have brought back a Black Cedar son out of this cow to use back in our herd. So that should explain exactly how I feel about the cow. Don't miss this one. If this bull was held back and brought to you as a 2, he would blow you away. 98/BWR-100/BWR

**6****JBob Pied Piper 323**

TATTOO: 323 DOB: 03/17/23 AAA: 20857814

Shoshone Pied Piper KFD20 Rito 707 of Ideal 533 70
 Shoshone Fran Eileen FD20

Shoshone P P 7105

Shoshone Margaret LJD71 Shoshone Beauigan Jgeca 27
 Shoshone Margaret JD71

Emulation N Bar 5522 Emulation 31
 Ankony 8F78 Lass 8F275

J J J Juanada 1650

Cole Creek 104 Juanada 8M C H Quantum 3330
 Cole Creek 104 Juanada 1256

BIRTH WT	85
BIRTH RATIO	100
205 WT	624
WN RATIO	100

CED	BW	WW	YW	MILK	\$EN
+5	+0.7	+25	+43	+29	+11

Herd Bull: An exciting set of flush brothers out of Shoshone PP 7105 and our elite Juanada 1650. The flush sisters will be an exciting addition to our herd as well. It's been proven that this PP 7105 crosses extremely well on OCC influenced cattle. So this will be an excellent opportunity to bring in some genetics that cross well and won't mess up the greatness and type of those Maternal Angus cows. 50% interest and possession with this bull. 94/BWR-105/WWR **Refer to page 9.**

**LOT 6 IN AUGUST 2023**

CHOOSE YOUR BULL | You pick one and I use the other.

7

JBob Encore 307

TATTOO: 307 DOB: 03/10/23 AAA: 20857818

Shoshone Encore 6310
Horse Butte 1126 of 3128
 Shoshone Ester 3128

Shoshone Bob 2712
 Shoshone Frances MHE63-93
 Shoshone Encore 6310
 Shoshone Ester 3116

Emulation 31
Hould Juanada 0228
 Cole Creek 104 Juanada 8M

F C R Elation Lad 652
 Miss Emulous 243
 C H Quantum 3330
 Cole Creek 104 Juanada 1256

BIRTH WT	84
BIRTH RATIO	100
205 WT	582
WN RATIO	100

CED	BW	WW	YW	MILK	\$EN
+9	-1.3	+27	+38	+19	+22

8

JBob Encore 311

TATTOO: 311 DOB: 03/12/23 AAA: 20857817

Shoshone Encore 6310
Horse Butte 1126 of 3128
 Shoshone Ester 3128

Shoshone Bob 2712
 Shoshone Frances MHE63-93
 Shoshone Encore 6310
 Shoshone Ester 3116

Emulation 31
Hould Juanada 0228
 Cole Creek 104 Juanada 8M

F C R Elation Lad 652
 Miss Emulous 243
 C H Quantum 3330
 Cole Creek 104 Juanada 1256

BIRTH WT	74
BIRTH RATIO	100
205 WT	617
WN RATIO	100

CED	BW	WW	YW	MILK	\$EN
+9	-1.3	+27	+38	+19	+22

This is an exciting mating in my opinion. 1126 is a sire daughter mating out of the solid Ester cow family from Shoshone/Horse Butte programs. Anyone that follows these programs fully understand the magnitude this cow family has done. I put him on the best E31 daughter I have and have great hopes for this mating. I have decided to give you all the choice of either sons. You pick one and I'll take the other. Excellent opportunity here. 50% interest and possession with this bull. 91/BWR-105/WWR **Refer to page 9.**

This is an exciting mating in my opinion. 1126 is a sire daughter mating out of the solid Ester cow family from Shoshone/Horse Butte programs. Anyone that follows these programs fully understand the magnitude this cow family has done. I put him on the best E31 daughter I have and have great hopes for this mating. I have decided to give you all the choice of either sons. You pick one and I'll take the other. Excellent opportunity here. 50% interest and possession with this bull. 91/BWR-105/WWR **Refer to page 9.**



SHOSHONE ESTER 3116

X



COLE CREEK JUANADA 1450 (8M)

9

JBob Freedom 337

TATTOO: 337 DOB: 03/24/23 AAA: 20863346

O C C Wholesome 667W
O C C Freedom 801F
 O C C Dixie Erica 628W

O C C Practical 841P
 O C C Juanada 664R
 O C C Practical 841P
 Chloe Dixie Erica 7313

L T Bandwagon 3105
Hould Juanada 7247
 JJJ Juanada 9025

Leachman Right Time
 L T Ms Vikings Value 0256
 JJJ Emblazon 523
 JJJ Juanada 6116

BIRTH WT	68
BIRTH RATIO	88
205 WT	623
WN RATIO	102

CED	BW	WW	YW	MILK	\$EN
+14	-2.8	+37	+63	+24	+14



Heifer Bull: This is an outstanding Freedom. He is stout and wide and grew very well this winter. Again lots of great cows in this bull lineage. Don't look past this bull. He is good. 100/BWR-101/WWR

FLUSH BROTHERS

10

JBob Jetstream 333

TATTOO: 333 DOB: 03/22/23 AAA: 20863341

O C C Emblazon 854E
O C C Jet Stream 825J
 O C C Juanada 968G

N Bar Emulation EXT
JJJ Juanada 8104
 Cole Creek 104 Juanada 8M

D H D Traveler 6807
 Dixie Erica of C H 1019

O C C Eureka 865E
 O C C Juanada 774A

Emulation N Bar 5522
 N Bar Primrose 2424

C H Quantum 3330
 Cole Creek 104 Juanada 1256

BIRTH WT	81
BIRTH RATIO	100
205 WT	708
WN RATIO	100

CED	BW	WW	YW	MILK	\$EN
+8	+0.6	+40	+70	+23	+14

Jetstream has done a superb job for us in the past and this mating has proven to be packed full of performance. These flush brothers have a full sister that is 10 years old this year and has proven herself to be an elite Angus cow for us. We have several full sisters to these brothers that we will bred this spring. These flush brothers out of 8104 by Jetstream and Moderator are possibly the best flush to date here. Excellent opportunity. 98/BWR-100/WWR **Refer to page 9.**

11

JBob Jetstream 321

TATTOO: 321 DOB: 03/06/23 AAA: 20863358

O C C Emblazon 854E
O C C Jet Stream 825J
 O C C Juanada 968G

N Bar Emulation EXT
JJJ Juanada 8104
 Cole Creek 104 Juanada 8M

D H D Traveler 6807
 Dixie Erica of C H 1019

O C C Eureka 865E
 O C C Juanada 774A

Emulation N Bar 5522
 N Bar Primrose 2424

C H Quantum 3330
 Cole Creek 104 Juanada 1256

BIRTH WT	80
BIRTH RATIO	100
205 WT	667
WN RATIO	100

CED	BW	WW	YW	MILK	\$EN
+8	+0.6	+40	+70	+23	+14

Jetstream has done a superb job for us in the past and this mating has proven to be packed full of performance. These flush brothers have a full sister that is 10 years old this year and has proven herself to be an elite Angus cow for us. We have several full sisters to these brothers that we will bred this spring. These flush brothers out of 8104 by Jetstream and Moderator are possibly the best flush to date here. Excellent opportunity. 99/BWR-100/WWR **Refer to page 9.**

12

JBob Confidence 325

TATTOO: 325 DOB: 03/17/23 AAA: 20863354

O C C Big Time 746Z
O C C Confidence 820C
 O C C Dixie Erica 628W

JBob Emulation 767
Hould Juanada 9009
 Hould Juanada 7249

O C C Rear End 751R
 O C C Dixie Erica 771R

O C C Practical 841P
 Chloe Dixie Erica 7313

Emulation N Bar 5522
 Hould Juanada 9021

L T Bandwagon 3105
 Hould Juanada 4303

BIRTH WT	55
BIRTH RATIO	100
205 WT	610
WN RATIO	100

CED	BW	WW	YW	MILK	\$EN
+8	+0.2	+46	+78	+21	+8

Double Bred Juanada: Power and Performance. I can't say enough about these young 767 daughters. This one is outstanding and this bull ties together OCC X 767 to make this outstanding individual. I really like this bull and his pedigree. 103/BWR-105/WWR



13

JBob Dominance 363

TATTOO: 363 DOB: 04/07/23 AAA: 20863345

Emulation N Bar 5522
JBob Emulation 767
 Hould Juanada 9021

O C C Big Time 746Z
Hould Juanada 8041
 Hould Juanada 3122

Emulation 31
 Ankony 8F78 Lass 8F275

O C C Anchor 771A
 Cole Creek 104 Juanada 8M

O C C Rear End 751R
 O C C Dixie Erica 771R

Horse Butte 6143 of 7143
 JJJ Juanada 9150

BIRTH WT	80
BIRTH RATIO	104
205 WT	751
WN RATIO	123

CED	BW	WW	YW	MILK	\$EN
+5	+1	+64	+101	+21	-6

Another outstanding 767 x OCC Big Time bull. These 767 are really working well on this cross. Also, this is another one of those outstanding big-time daughters. Big Time is for real and is making range cows that can get it done. This bulls mother is no exception. 102/BWR-108/WWR

14

JBob Moderator 314

TATTOO: 314 DOB: 03/13/23 AAA: 20863336

O C C Headliner 661H
O C C Moderator 825M
 O C C Dixie Erica 845K

N Bar Emulation EXT
JJJ Juanada 8104
 Cole Creek 104 Juanada 8M

O C C Emblazon 854E
 O C C Juanada 858F

O C C Emblazon 854E
 O C C Dixie Erica 960H

Emulation N Bar 5522
 N Bar Primrose 2424

C H Quantum 3330
 Cole Creek 104 Juanada 1256

BIRTH WT	68
BIRTH RATIO	100
205 WT	683
WN RATIO	100

CED	BW	WW	YW	MILK	\$EN
+10	-0.4	+35	+63	+23	+15

Stout and wide is an accurate appraisal of this set of flush brothers. There isn't much difference in type between the whole flush. I retained one of the flush mates to these bulls. That should tell you enough. Unfortunately I only got one heifer mate to this set of flush brothers but she is awesome. 97/BWR-100/WWR **Refer to page 9.**

15**JBob Moderator 312**

TATTOO: 312 DOB: 03/12/23 AAA: 20863349

O C C Headliner 661H	O C C Emblazon 854E	BIRTH WT 65
O C C Dixie Erica 845K	O C C Juanada 858F	
N Bar Emulation EXT	O C C Emblazon 854E	
JJJ Juanada 8104	O C C Dixie Erica 960H	
Cole Creek 104 Juanada 8M	Emulation N Bar 5522	BIRTH RATIO 100
	N Bar Primrose 2424	205 WT 610
	C H Quantum 3330	WN RATIO 100
	Cole Creek 104 Juanada 1256	

CED	BW	WW	YW	MILK	\$EN
+10	-0.4	+35	+63	+23	+15

Stout and wide is an accurate appraisal of this set of flush brothers. There isn't much difference in type between the whole flush. I retained one of the flush mates to these bulls. That should tell you enough. Unfortunately I only got 1 heifer mate to this set of flush brothers but she is awesome. 99/BWR-100WWR **Refer to page 9.**

FEET-STRUCTURE-DISPOSITION

I am not going to spend a lot of time talking about this. It is astonishing to me how this is all becoming the buzz words in almost every publication and catalog you pick up. I could go off on a tangent but I will spare you. Breeding cattle is really quite easy, if you put a line in the sand on what you want and nothing else. It is extremely satisfying. Trimming a bulls foot in order to sell him in your production sale is not on my side of that line in the sand. There is no amount of money that could be made from the sale of that animal that would justify the repercussions of that one animal coming back and or losing that customer. It is just that easy.

16**JBob Confidence 308**

TATTOO: 308 DOB: 03/10/23 AAA: 20863328

O C C Big Time 746Z	O C C Rear End 751R	BIRTH WT 79
O C C Dixie Erica 628W	O C C Dixie Erica 771R	
D D A Fahren 21X	O C C Practical 841P	
JJJ Juanadamere 6104	Chloe Dixie Erica 7313	
Cole Creek Juanadamere 588	Fahren of Wye Umf 5830	BIRTH RATIO 104
	D D A Melisa 549	205 WT 577
	Cole Creek Juanada Lad 104	WN RATIO 94
	Cole Creek Juanadamere 1766	

CED	BW	WW	YW	MILK	\$EN
+8	+0.5	+30	+54	+19	+22

If you're looking for a bull to make long lasting cows with a strong desire to live. This is the bull to own. His mother died here at 17 yrs old last fall and this tough little bugger kept right on going. His mother is as beautiful of a cow as you could ask for. Perfect udder, and as fertile as they make them. 98/BWR-99/WWR



JUANADA 6104, MOTHER OF LOT 16 AND GRANDMOTHER OF LOTS 48, 51, 57, 72, AND 82

FLUSH BROTHERS**17****JBob Pied Piper 317**

TATTOO: 317 DOB: 03/15/23 AAA: 20857816

Shoshone Pied Piper KFD20	Rito 707 of Ideal 533 70	BIRTH WT 86
Shoshone P P 7105	Shoshone Fran Eileen FD20	
Shoshone Margaret LJD71	Shoshone Beauigan Jgeca 27	
Emulation N Bar 5522	Shoshone Margaret JD71	
J J J Juanada 1650	Emulation 31	BIRTH RATIO 100
Cole Creek 104 Juanada 8M	Ankony 8F78 Lass 8F275	205 WT 572
	C H Quantum 3330	WN RATIO 100
	Cole Creek 104 Juanada 1256	

CED	BW	WW	YW	MILK	\$EN
+5	+0.7	+25	+43	+29	+11

An exciting set of flush brothers out of Shoshone PP 7105 and our elite Juanada 1650. The flush sisters will be an exciting addition to our herd as well. It's been proven that this PP 7105 crosses extremely well on OCC influenced cattle. So this will be an excellent opportunity to bring in some genetics that cross well and won't mess up the greatness and type of those Maternal Angus cows. 94/BWR-105/WWR **Refer to page 9.**

18**JBob Pied Piper 319**

TATTOO: 319 DOB: 03/16/23 AAA: 20857815

Shoshone Pied Piper KFD20	Rito 707 of Ideal 533 70	BIRTH WT 85
Shoshone P P 7105	Shoshone Fran Eileen FD20	
Shoshone Margaret LJD71	Shoshone Beauigan Jgeca 27	
Emulation N Bar 5522	Shoshone Margaret JD71	
J J J Juanada 1650	Emulation 31	BIRTH RATIO 100
Cole Creek 104 Juanada 8M	Ankony 8F78 Lass 8F275	205 WT 665
	C H Quantum 3330	WN RATIO 100
	Cole Creek 104 Juanada 1256	

CED	BW	WW	YW	MILK	\$EN
+5	+0.7	+25	+43	+29	+11

An exciting set of flush brothers out of Shoshone PP 7105 and our elite Juanada 1650. The flush sisters will be an exciting addition to our herd as well. It's been proven that this PP 7105 crosses extremely well on OCC influenced cattle. So this will be an excellent opportunity to bring in some genetics that cross well and won't mess up the greatness and type of those Maternal Angus cows. 94/BWR-105/WWR **Refer to page 9.**

19**JBob Confidence 335**

TATTOO: 335 DOB: 03/22/23 AAA: 20863357

O C C Big Time 746Z

O C C Rear End 751R

O C C Dixie Erica 771R

O C C Confidence 820C

O C C Dixie Erica 628W

O C C Practical 841P

Chloe Dixie Erica 7313

L T Bandwagon 3105

Leachman Right Time

L T Ms Vikings Value 0256

Hould Juanada 7223

Hould Juanada 4304

O C C Jet Stream 825J

Hould Juanada 0228

BIRTH WT
78BIRTH RATIO
111205 WT
650WN RATIO
105

CED	BW	WW	YW	MILK	\$EN
+3	+2.3	+45	+75	+23	+10

This guy has been a stud from the beginning. His mother has got it all from performance, perfect udder, AI bred every year and easy to look at. This is a cool cat. 104/BWR-107/WWR

20**JBob Fusion 315**

TATTOO: 315 DOB: 03/15/23 AAA: 20863326

O C C Tremendous 619T

O C C Emblazon 854E

O C C Dixie Erica 960H

CFC Fusion 8MT1

Miss Wix 2022 HC Mc Cumber

Leachman Right Time

Miss Wix 7111 of Mc Cumber

G D A R Traveler 9161

D H D Traveler 6807

G D A R Sapphire 728

Hould Chloe 5025

W C R Black Chloe 821U

Shoshone Felix 6310 J O D

W C R Black Chloe 98

BIRTH WT
76BIRTH RATIO
99205 WT
597WN RATIO
98

CED	BW	WW	YW	MILK	\$EN
+12	-1.1	+39	+67	+24	+14

Heifer Bull: This cow never misses bringing in a top end calf. She did it again in this attractive bull. Calving ease with a strong cow to back him up. 97/BWR-99/WWR

21**JBob Freedom 364**

TATTOO: 364 DOB: 04/07/23 AAA: 20863355

O C C Wholesome 667W

O C C Practical 841P

O C C Juanada 664R

O C C Freedom 801F

O C C Dixie Erica 628W

O C C Practical 841P

Chloe Dixie Erica 7313

O C C Jet Stream 825J

O C C Emblazon 854E

O C C Juanada 968G

Hould Juanada 4310

JJJ Juanada 9025

JJJ Emblazon 523

JJJ Juanada 6116

BIRTH WT
74BIRTH RATIO
96205 WT
602WN RATIO
99

CED	BW	WW	YW	MILK	\$EN
+12	-1.9	+34	+58	+21	+20

Heifer Bull: I watched this bull most all year and fully intended on keeping him for ourselves. His mother is a fantastic made daughter of Jetstream out of our 18 yr old 6116 cow who is still alive and producing. Double bred OCC Juanada 968G and the mother of Jetstream and Practical. Most that have seen her have said she is one of the best cows at OCC. 96/BWR-99/WWR

**MOTHER OF LOT 21****22****JBob Freedom 379**

TATTOO: 379 DOB: 05/01/23 AAA: 20863329

O C C Wholesome 667W

O C C Practical 841P

O C C Juanada 664R

O C C Freedom 801F

O C C Dixie Erica 628W

O C C Practical 841P

Chloe Dixie Erica 7313

G D A R Traveler 9161

D H D Traveler 6807

G D A R Sapphire 728

Hould Juanada 5031

Hould Juanada 0228

Emulation 31

Cole Creek 104 Juanada 8M

BIRTH WT
70BIRTH RATIO
91205 WT
726WN RATIO
119

CED	BW	WW	YW	MILK	\$EN
+14	-2.8	+44	+71	+24	+14

Heifer Bull: This is the first calves from OCC Freedom to sell. Freedom is blowing the doors off here and will see heavy use here in the future. 5031 is perfect in her type and slopes perfectly from hooks to pins with a beautiful udder. A direct daughter out of the 0228 cow that has many progeny selling bulls today. This bull has a brother in the 2yr old division sired by Hunter. Take hold and buy them both for a long lasting set of replacement females. 96/BWR-101/WWR

23**JBob Fusion 385**

TATTOO: 385 DOB: 04/16/23 AAA: 20863343

O C C Tremendous 619T

O C C Emblazon 854E

O C C Dixie Erica 960H

CFC Fusion 8MT1

Miss Wix 2022 HC Mc Cumber

Leachman Right Time

Miss Wix 7111 of Mc Cumber

Sinclair Emulation 5522 XP

Emulation N Bar 5522

N Bar Primrose Y3051

Hould Juanada 6003

JJJ Juanada 8108

Emulation N Bar 5522

Cole Creek 104 Juanada 8M

BIRTH WT
70BIRTH RATIO
91205 WT
614WN RATIO
100

CED	BW	WW	YW	MILK	\$EN
+14	-2.6	+39	+69	+22	+12

Heifer Bull: Triple bred Emulation in this heifer bull. His mother is about as Linebred as a person dares do it. And 6003 is awesome and a gentle cow. Perfect udder and has that range cow look. With Fusion this bull carries plenty of meat and muscle. 100/BWR-104/WWR

1/2 INTEREST & 1/2 POSSESSION

The buyer will get immediate use of him and all salvage value. When the bull gets to be 4-5 years old and you are done with him, we may take the option of bringing the bull back for our own use. I have done this with several bulls and if you are interested in one of these bulls and have questions please call us and we can discuss it. I can also give you references to the buyers of the bulls that have sold with this option and get there opinion on how well it has worked for them.

24**JBob Dominance 350**

TATTOO: 350 DOB: 04/01/23 AAA: 20863333

Emulation N Bar 5522 Emulation 31
 Ankony 8F78 Lass 8F275

JBob Emulation 767
 Hould Juanada 9021 O C C Anchor 771A
 Cole Creek 104 Juanada 8M

O C C Big Time 746Z O C C Rear End 751R
 O C C Dixie Erica 771R

Hould Juanada 8027
 Hould Juanada 0250 N Bar Emulation EXT
 Cole Creek Juanadamere 096

BIRTH WT	80
BIRTH RATIO	104
205 WT	624
WN RATIO	102

CED	BW	WW	YW	MILK	\$EN
+6	+0.4	+50	+80	+18	+11

Another nicely made 767 x OCC bull. The mother is perfectly made and has done a great job for us. She is sired by OCC Big Time if you take notice he has sired some very productive and fertile cows for us. And the EXT mother is still knocking out calves at 14 yrs old. It's all here. 105/BWR-107/WWR

25**JBob Fusion 360**

TATTOO: 360 DOB: 04/08/23 AAA: 20863324

O C C Tremendous 619T O C C Emblazon 854E
 O C C Dixie Erica 960H

CFC Fusion 8MT1
 Miss Wix 2022 HC Mc Cumber Leachman Right Time
 Miss Wix 7111 of Mc Cumber

O C C Jet Stream 825J O C C Emblazon 854E
 O C C Juanada 968G

Hould Juanada 4304
 Hould Juanada 0228 Emulation 31
 Cole Creek 104 Juanada 8M

BIRTH WT	76
BIRTH RATIO	99
205 WT	673
WN RATIO	110

CED	BW	WW	YW	MILK	\$EN
+13	-1.5	+49	+79	+26	+7

360 is a calving ease bull with power and growth to spare. His mother will no doubt be in our donor lineup before long. Very strong cow family behind this bull. 99/BW-106/WWR

26**JBob Dominance 367**

TATTOO: 367 DOB: 04/07/23 AAA: 20863334

Emulation N Bar 5522 Emulation 31
 Ankony 8F78 Lass 8F275

JBob Emulation 767
 Hould Juanada 9021 O C C Anchor 771A
 Cole Creek 104 Juanada 8M

FairView JH Rito F0203 2223 PBC 707 1M F0203
 Cole Creek 104 Juanada 8M

Hould Juanada 7267
 Hould Juanada 3122 Horse Butte 6143 of 7143
 JJJ Juanada 9150

BIRTH WT	79
BIRTH RATIO	103
205 WT	650
WN RATIO	106

CED	BW	WW	YW	MILK	\$EN
+7	+0.6	+46	+76	+23	+6

I watched this bull calf all summer long. His mother is what I would call ideal in her type for this ranch. This bull has a full sister that will calve this spring and she is one of my favorites. This cows sire is a Rito Fo203 son out of the old 1450 cow. I have about 6-8 of these daughters in production here and they all produce a lot of calf at weaning. I have a small amount of semen left on the old bull and plan to do a few select matings and a couple flushes to him. There is great potential in this bull. 91/BWR-107/WWR

27**JBob Confidence 327**

TATTOO: 327 DOB: 03/18/23 AAA: 20863332

O C C Big Time 746Z O C C Rear End 751R
 O C C Dixie Erica 771R

O C C Confidence 820C
 O C C Dixie Erica 628W O C C Practical 841P
 Chloe Dixie Erica 7313

O C C Jet Stream 825J O C C Emblazon 854E
 O C C Juanada 968G

Hould Juanada 4315
 J J J Juanada 1550 Basin Q Bar 163
 Cole Creek 104 Juanada 8M

BIRTH WT	
BIRTH RATIO	
205 WT	575
WN RATIO	94

CED	BW	WW	YW	MILK	\$EN
+8	-0.1	+31	+55	+19	+20

I really like this bulls mother. She has 3 daughters by 5522 XP in the herd that are exactly what I like to see in the OCC x Emulation cross. This bull will definitely be getting some attention come sale day. He is correct and made to make cows. Marjean and Duke Warren bought this bulls brother by Rustler and have gotten along very well with him. 95/BWR-98/WWR

28**JBob Confidence 310**

TATTOO: 310 DOB: 03/11/23 AAA: 20863331

O C C Big Time 746Z O C C Rear End 751R
 O C C Dixie Erica 771R

O C C Confidence 820C
 O C C Dixie Erica 628W O C C Practical 841P
 Chloe Dixie Erica 7313

O C C Jet Stream 825J O C C Emblazon 854E
 O C C Juanada 968G

Hould Lady 8029
 Brusett Black Lady Z25 21AR Denali 0215A
 Brusett Black Lady W660

BIRTH WT	75
BIRTH RATIO	97
205 WT	559
WN RATIO	91

CED	BW	WW	YW	MILK	\$EN
+8	+0.4	+37	+67	+17	+18

This bulls mom does everything just right. She is beautiful to look at and has never missed AI. Last year I mistakenly bred her to Encore 1126 and will be getting a heifer. Dang the luck! 101/BWR-106/WWR

29**JBob Confidence 313**

TATTOO: 313 DOB: 03/12/23 AAA: 20863351

O C C Big Time 746Z O C C Rear End 751R
 O C C Dixie Erica 771R

O C C Confidence 820C
 O C C Dixie Erica 628W O C C Practical 841P
 Chloe Dixie Erica 7313

O C C Big Time 746Z O C C Rear End 751R
 O C C Dixie Erica 771R

Hould Emily 8039
 Emily 4B24 of 05 812 Paturm 05 of 81 54
 Emula U812 of 45 82

BIRTH WT	82
BIRTH RATIO	106
205 WT	60
WN RATIO	99

CED	BW	WW	YW	MILK	\$EN
+3	+1.6	+48	+84	+15	+9

Double bred OCC Big Time. Stout and thick and ready to go breed some cows. 103/BWR-101/WWR

30**JBob Confidence 316**

TATTOO: 316 DOB: 03/15/23 AAA: 20863347

O C C Big Time 746Z O C C Rear End 751R
O C C Dixie Erica 628W O C C Dixie Erica 771R**O C C Confidence 820C**O C C Dixie Erica 628W O C C Practical 841P
Chloe Dixie Erica 7313O C C Y Not 388Y O C C Night Watch 902N
O C C Juanada 723S**FA B Pride 603**B Pride 3019 of Mc Cumber Sinclair Extra 4X13
B Pride 636 of Mc Cumber

BIRTH WT	62
BIRTH RATIO	89
205 WT	601
WN RATIO	99

CED	BW	WW	YW	MILK	\$EN
+11	-1.2	+41	+70	+22	+15

Heifer Bull: I purchased this cow several years ago and she has done a great job for us. Big Time, Practical, Night Watch and 4x13 all have a stellar history for making functional cows so I would expect nothing less from this bull. 92/BWR-100/WWR

31**JBob Fusion 355**

TATTOO: 355 DOB: 04/03/23 AAA: 20863353

O C C Tremendous 619T O C C Emblazon 854E
O C C Dixie Erica 960H**CFC Fusion 8MT1**Miss Wix 2022 HC Mc Cumber Leachman Right Time
Miss Wix 7111 of Mc CumberL T Bandwagon 3105 Leachman Right Time
L T Ms Vikings Value 0256**Hould Chloe 7219**W C R Black Chloe 821U Shoshone Felix 6310 J O D
W C R Black Chloe 98

BIRTH WT	80
BIRTH RATIO	104
205 WT	683
WN RATIO	112

CED	BW	WW	YW	MILK	\$EN
+10	-0.8	+50	+81	+26	+1

Heifer Bull: Lots of performance and function in this bull. 110/BWR-105/WWR

32**JBob Fusion 366**

TATTOO: 366 DOB: 04/07/23 AAA: 20863356

O C C Tremendous 619T O C C Emblazon 854E
O C C Dixie Erica 960H**CFC Fusion 8MT1**Miss Wix 2022 HC Mc Cumber Leachman Right Time
Miss Wix 7111 of Mc CumberEmulation N Bar 5522 Emulation 31
Ankony 8F78 Lass 8F275**MH Melisa 311**D D A Melisa 545 Bear of Wye Umf 6591
D D A Melisa 115

BIRTH WT	70
BIRTH RATIO	92
205 WT	623
WN RATIO	102

CED	BW	WW	YW	MILK	\$EN
+14	-2.4	+36	+60	+23	+18

Heifer Bull: The cow stems from the Melisa cow family from DDA that produced DDA 27c and later found great success in the Monte Howrey herd. This particular cow comes from the Howrey herd and has had numerous ET bulls sold in the Hague Angus Ranch in Nebraska with a lot of attention. 92/BWR-102/WWR

33**JBob Dominance 331**

TATTOO: 331 DOB: 03/20/23 AAA: 20863340

Emulation N Bar 5522 Emulation 31
Ankony 8F78 Lass 8F275**JBob Emulation 767**Hould Juanada 9021 O C C Anchor 771A
Cole Creek 104 Juanada 8MG D A R Traveler 9161 D H D Traveler 6807
G D A R Sapphire 728**Hould Juanada 5035**JJJ Juanada 6116 D D A Fahren 21X
Cole Creek 104 Juanada 8M

BIRTH WT	80
BIRTH RATIO	104
205 WT	615
WN RATIO	101

CED	BW	WW	YW	MILK	\$EN
+10	-0.3	+38	+67	+23	+17

Heifer Bull: Double Bred Juanada: This bulls mother is a little larger outlined and finer made with a perfect udder. Her daughters in production here are productive and can really take care of things. 97/BWR-102/WWR

34**JBob Hunter 324**

TATTOO: 324 DOB: 03/10/2024 AAA: Pending

O C C Focus 813F Basin Rainmaker 654X
Dixie Erica of C H 1019**O C C Hunter 928H**O C C Dixie Erica 960E O C C Anchor 771A
Dixie Erica of R R 4345D D A Fahren 21X Fahren of Wye Umf 5830
D D A Melisa 549**JJJ Juanada 6116**Cole Creek 104 Juanada 8M C H Quantum 3330
Cole Creek 104 Juanada 1256

BIRTH WT	68
BIRTH RATIO	ET
205 WT	ET
WN RATIO	ET

CED	BW	WW	YW	MILK	\$EN
+8	-1.2	27	49	21	21

The Hunter cattle are doing a great job for us. We are now calving out his first daughters and they are superb. Beautifully uddered and outstanding mothers. This bulls mom is 18 years old and is still in production. We are flushing her at this time so expect more from her. This bulls receipt mother never took great care of him and so he is a little behind but don't that hold that against him. He will grow into an absolutely stunning bull. His sisters are drop dead gorgeous. 91/BWR-101/WWR

**FULL SISTER TO LOT 34**

35**JBob Dominance 354**

TATTOO: 354 DOB: 04/01/23 AAA: 20863330

Emulation N Bar 5522 Emulation 31
Ankony 8F78 Lass 8F275**JBob Emulation 767**Hould Juanada 9021 O C C Anchor 771A
Cole Creek 104 Juanada 8MSinclair Emulation 5522 XP Emulation N Bar 5522
N Bar Primrose Y3051**Hould Juanada 8045**Hould Juanada 4315 O C C Jet Stream 825J
J J J Juanada 1550

BIRTH WT	74
BIRTH RATIO	96
205 WT	634
WN RATIO	104

CED	BW	WW	YW	MILK	\$EN
+9	-0.9	+45	+76	+20	+9

Heifer Bull: Rugged made bull here and lined up a couple times to NBar 5522. Not to mention OCC Jetstream, Anchor and to top off the maternal goodness throw in Basin Q-Bar. That's a lot of great maternal genetics with Maternal Integrity in one package. Look up his full brother in the 2 yr olds selling as well. Put them together for a consistent set of knock your socks off heifer calves. 103/BWR-102/WWR

36**JBob Dominance 346**

TATTOO: 346 DOB: 04/01/23 AAA: 20863339

Emulation N Bar 5522 Emulation 31
Ankony 8F78 Lass 8F275**JBob Emulation 767**Hould Juanada 9021 O C C Anchor 771A
Cole Creek 104 Juanada 8MBasin Q Bar 163 Ankonian Q Bar E764
J R S Pride of 64**Hould Juanada 3050**Cole Creek 104 Juanada 8M C H Quantum 3330
Cole Creek 104 Juanada 1256

BIRTH WT	75
BIRTH RATIO	99
205 WT	575
WN RATIO	94

CED	BW	WW	YW	MILK	\$EN
+10	-1.3	+31	+53	+22	+18

Heifer Bull: Double bred Juanada: Mother is one of the full sisters to our herd bull JBob Montana who was purchased by Keith and Nikki Medalen of Towner ND. They have had great success with Montana and he came here later in life as one of our 50/50 bulls. Again lots of great Maternal ancestry in this bull. 100/BWR-98/WWR

37**JBob Dominance 334**

TATTOO: 334 DOB: 03/22/23 AAA: 20863338

Emulation N Bar 5522 Emulation 31
Ankony 8F78 Lass 8F275**JBob Emulation 767**Hould Juanada 9021 O C C Anchor 771A
Cole Creek 104 Juanada 8MO C C Jet Stream 825J O C C Emblazon 854E
O C C Juanada 968G**Hould Marshall Queen 4308**SCC Marshall Queen C723 Pinebank Waigroup 41/97
Msar Marshall Queen 437-615

BIRTH WT	68
BIRTH RATIO	88
205 WT	601
WN RATIO	98

CED	BW	WW	YW	MILK	\$EN
+12	-1.9	+38	+62	+21	+19

Heifer Bull: Another Emulation x OCC cross that works to make those range adaptable long lived females. This bulls mother is attractive and has never failed to bring in a AI calf. 96/BWR-96/WWR

38**JBob Dominance 336**

TATTOO: 336 DOB: 03/24/23 AAA: 20863325

Emulation N Bar 5522 Emulation 31
Ankony 8F78 Lass 8F275**JBob Emulation 767**Hould Juanada 9021 O C C Anchor 771A
Cole Creek 104 Juanada 8MR R Rito 707 Rito N Bar
Eriskay of Rollin Rock 3**JJJ Delia 8102**Octoraro Delia 151 Fabron of Wye
Octoraro Delia 503

BIRTH WT	78
BIRTH RATIO	103
205 WT	556
WN RATIO	91

CED	BW	WW	YW	MILK	\$EN
+6	-0.2	+32	+49	+17	+23

Old School genetics wrapped up in this package. His brother sells as a 2 yr old. So put the two together and make a set of heifers for the future. Every year she has a bull I say the same thing. Pound for pound this Rito 707 daughter will out do any of the other cows. She is now 16 yrs old and will calve first cycle. Productive and long lived. Two traits that are hard to come by anymore in mainstream Angus. 101/BWR-100/WWR

39**JBob Dominance 361**

TATTOO: 361 DOB: 04/08/23 AAA: 20863337

Emulation N Bar 5522 Emulation 31
Ankony 8F78 Lass 8F275**JBob Emulation 767**Hould Juanada 9021 O C C Anchor 771A
Cole Creek 104 Juanada 8MN Bar Emulation EXT Emulation N Bar 5522
N Bar Primrose 2424**JJJ Juanada 9150**Cole Creek 104 Juanada 8M C H Quantum 3330
Cole Creek 104 Juanada 1256

BIRTH WT	68
BIRTH RATIO	90
205 WT	630
WN RATIO	103

CED	BW	WW	YW	MILK	\$EN
+12	-2.2	+40	+66	+24	+8

Heifer Bull: Double bred Emulation and Juanada 1450 in a definite calving ease package. This bulls mother has been in ET all fall and we have lots of great matings banked up on her. She is super productive and never misses a beat. Just look at here production ratios and 15 years old. This bull has a 2 yr old also selling in the sale. Tie them together and make some females for your ranches future. 96/WWR-110/WWR

40**JBob Double Down 343**

TATTOO: 343 DOB: 03/26/23 AAA: 20863348

Sinclair Emulation 5522 XP Emulation N Bar 5522
N Bar Primrose Y3051**JBob Double Down 823**Hould Juanada 2150 N Bar Emulation EXT
Cole Creek 104 Juanada 8MShoshone P P 7105 Shoshone Pied Piper K F D 20
Shoshone Margaret LJD71**J J J Juanada 2450**Cole Creek 104 Juanada 8M C H Quantum 3330
Cole Creek 104 Juanada 1256

BIRTH WT	84
BIRTH RATIO	110
205 WT	649
WN RATIO	106

CED	BW	WW	YW	MILK	\$EN
+2	+2.4	+28	+55	+27	+5

Double Bred Juanada: The sire of this bull was purchased by Paul Kemnitz of Platte SD. I brought the bull back for a couple seasons because his mother is another outstanding EXT X Juanada 1450 daughter for us. The mother of this bull 2450 is a dynamite cow and ties in the legendary Shoshone PP 7105 x 1450. I can't imagine that this bull isn't going to make a great set of calves. 97/BWR-106/WWR

ET Day



WHAT OUR CUSTOMERS ARE SAYING

Hould's genetics are straight up amazing. If you are looking for ranch raised bulls, not feedlot bulls, this is it. The past three years we have been in a major drought. Calf weight has been down on everyone but us. We have gain over 50lbs in the last three years and it has to do with these great bulls J Bob and his family have put together. We started out buying 10 or so the first year, just to try them out. Now almost every bull I own is from Hould's. The hot summer days, I never see them laying around in the shade or next to the watering hole. They are bred to work, and they do. Feet are a big deal on our place, it's pretty rugged country. Too big or over-fed, they fall apart pretty fast. I have not had one yet come in lame from that. I can't say enough about how they perform for us and how much they have helped with weaning weights and the replacement heifers we are growing now. - Blake Boschee

TWO YEAR OLDS

In the fall of 2022 we decided that we wanted to add a substantial amount of 2 yr old bulls to our annual sales. After a lot of thought on how to make the division of what makes the sale and what doesn't. It was decided that we will retain the bull calves from that years 2-3-4 yr old cows. It puts a definite line on the sand on what is getting held back and to not have it appear that it's the sub par bulls getting held back. Because there is nothing further from the truth. It's actually our youngest and freshest genetics on the ranch.

So with that decision those bulls were retained. Also as a further experimental test I retained a couple of bulls out of cows that are 10 and older as well as a couple of bulls out of cows that have produced top end bulls for us in the past. Being new to holding over bulls I wanted to see the difference if any in the development of them versus the younger end of the cows bulls. This is a learning experience for us and I want to make decisions for the future based on our discoveries and experiences and not on a hunch.

We, again, retained all bull calves out of those same age group of young cows in the fall of 2023 as well as several other bulls from the 10+ yr old cows. Each year we will withhold another age group of bulls until we are entirely selling 2yr old bulls. That is our plan going forward.

Development

The bulls were weaned and put on grass meadows until January 1 2023. At that point they were sent to a feed yard in Harlem to gain 1.75# gain a day. On May 1 2023 I got them back home and they were grazed on grass until November 31 2023. At that point they have been on a ration of free choice grass/Alfalfa hay (13.3% CP, 29.7 NEG, 115 RFV) along with no more than 1% of their body weight in supplements with a max of 6# of cracked corn and 5# of a 21% CP pellet. We feel that this is a reasonable and respectful way to grow them out. This is all a major learning curve for us and it will take some time to fine tune it. But at this point the bulls have exceeded all of our expectations. These bulls have been developed like I would want my own purchased bulls to show up at my place. Developed modestly and with health and longevity in mind. They are hard muscled and fit to go out and breed cows. We will not be feeding bulls to be fat and so if you want 1700# 2 yr old bulls. I would suggest you not waste your time here. But if you're looking for 2yr olds that are grown out with health and longevity in mind, we will have them in volume for you on sale day.

41

JBob Freighter 236

TATTOO: 236 DOB: 03/11/22 AAA: 20859025

GCC Hunter 649U

O C C Hunter 928H

O C C Freightcar 655F

O C C Juanada 862M

O C C Dixie Erica 805Y

O C C Jet Stream 825J

O C C Dixie Erica 607P

C C A Emblazon 702

O C C Emblazon 854E

Limestone Blackcap R128

Hould Juanada 0107

O C C Big Time 746Z

Hould Juanada 8037

Hould Juanada 2115

BIRTH WT
77

BIRTH RATIO
104

205 WT
604

CED	BW	WW	YW	MILK	\$EN
+6	+1.9	+38	+69	+21	+17

POWER BULL: I'm just going to say that if this bulls mother was 10 yrs old. This bull would not be listed for sale. He would be listed in the reference sire section. His mother is outstanding and comes from a long line of very productive long lasting cows. Everything about this bull is on point and has that herd bull look. Don't pass by this bull. 50% interest and possession with this bull. 97/BWR-106/WWR

42

JBob Surpass 235

TATTOO: 235 DOB: 03/11/22 AAA: 20859041

Emulation N Bar 5522

Emulation 31

Sinclair Emulation 5522 XP

Ankony 8F78 Lass 8F275

N Bar Primrose Y3051

N Bar Emulation EXT

N Bar Primrose 2429

O C C Legacy 839L

O C C Echelon 857E

O C C Dixie Erica 960E

Hould Juanada 8023

J J J Juanada 2450

Shoshone P P 7105

Cole Creek 104 Juanada 8M

BIRTH WT
83

BIRTH RATIO
102

205 WT
613

CED	BW	WW	YW	MILK	\$EN
+5	+1.2	+33	+59	+21	+18

Wowzer! Look at this pedigree! You will absolutely love this guys mother and grand mother. He has it all tied up in a perfect package, and he looks the part. He is what I envision for the future and is our goal to market 2 yr olds just like him. This bull is very good. 98/BWR-99/WWR

43**JBob Hunter 234**

TATTOO: 234 DOB: 03/11/22 AAA: 20859029

Emulation N Bar 5522
Sinclair Emulation 5522 XP
 N Bar Primrose Y3051

Emulation 31
 Ankony 8F78 Lass 8F275
 N Bar Emulation EXT
 N Bar Primrose 2429

Rito 054 G D A R
Hould Juanada 4350
 Cole Creek 104 Juanada 8M

C S U Rito 4114
 Blackcap Forever 485 GDAR
 C H Quantum 3330
 Cole Creek 104 Juanada 1256

BIRTH WT
84
BIRTH RATIO
102
205 WT
522

CED	BW	WW	YW	MILK	\$EN
+4	+1.4	+23	+43	+21	+20

Another great Hunter son and out of our herd bull JBob Classics full sister. She was a model cow and unfortunately we lost her late summer and this calf was weaned a couple months early. So that is why he is in the sale and out of a cow that wasn't in the age group I wanted the 2's from. Excellent opportunity here. 100/BWR-98/WWR

44**JBob Freighter 271**

TATTOO: 271 DOB: 03/25/22 AAA: 20859039

GCC Hunter 649U
O C C Freightcar 655F
 O C C Dixie Erica 805Y

O C C Hunter 928H
 O C C Juanada 862M
 O C C Jet Stream 825J
 O C C Dixie Erica 607P

Octoraro Ritolation 2503
Octoraro Delia 933
 Octoraro Delia 860

Rito 054 G D A R
 Octoraro Delia 503
 PBC 707 1M F0203
 Octoraro Delia 503

BIRTH WT
82
BIRTH RATIO
108
205 WT
670

CED	BW	WW	YW	MILK	\$EN
+8	+3	+23	+41	+24	+21

Stout and very correct is how I would describe 271. The last bull out of the 15 yr old Delia cow. She was an absolute trooper for us. There was nothing she couldn't handle and coming from Pennsylvania I didn't know how well she would transition. Her first bull here sold to Rick Hansen from Froid and did an outstanding job for him. 102/BWR-101/WWR

45**JBob Freightcar 270**

TATTOO: 270 DOB: 04/03/22 AAA: 20904853

GCC Hunter 649U
O C C Freightcar 655F
 O C C Dixie Erica 805Y

O C C Hunter 928H
 O C C Juanada 862M
 O C C Jet Stream 825J
 O C C Dixie Erica 607P

C C A Emblazon 702
Hould Delia 0115
 Hould Delia 8063

O C C Emblazon 854E
 Limestone Blackcap R128
 O C C Big Time 746Z
 Hould Delia 2113

BIRTH WT
78
BIRTH RATIO
100
205 WT
640

CED	BW	WW	YW	MILK	\$EN
+6	+1.8	+36	+67	+20	+19

Outstanding bull here. Another Freightcar x Emblazon cross bred much like the 236 bull in the sale. I can't express enough how easy fleshing these Freightcar cattle are. If your desire is to add fleshing ability and reduce some frame in those mainstream cattle. This is your bull.

46**JBob Freightcar 247**

TATTOO: 247 DOB: 03/13/22 AAA: 20859040

GCC Hunter 649U
O C C Freightcar 655F
 O C C Dixie Erica 805Y

O C C Hunter 928H
 O C C Juanada 862M
 O C C Jet Stream 825J
 O C C Dixie Erica 607P

Horse Butte 6143 of 7143
Hould Juanada 0131
 Hould Juanada 4313

Horse Butte 1116 of 3116
 HBR Shoshone Ester 7143
 O C C Jet Stream 825J
 JJJ Juanada 8104

BIRTH WT
80
BIRTH RATIO
107
205 WT
679

CED	BW	WW	YW	MILK	\$EN
+7	+1	+36	+61	+25	+16

Cool pedigree on this long made Freightcar son. I like the hip and stretch on him. His mother is outstanding and comes from a long line of great cows. His mother is the sister the the great Jetstream and Moderator flush bulls that sell today. 102/BWR-105/WWR

47**JBob Dominance 267**

TATTOO: 267 DOB: 03/25/22 AAA: 20859032

Emulation N Bar 5522
JBob Emulation 767
 Hould Juanada 9021

Emulation 31
 Ankony 8F78 Lass 8F275
 O C C Anchor 771A
 Cole Creek 104 Juanada 8M

Sinclair Emulation 5522 XP
Hould Juanada 8045
 Hould Juanada 4315

Emulation N Bar 5522
 N Bar Primrose Y3051
 O C C Jet Stream 825J
 J J J Juanada 1550

BIRTH WT
77
BIRTH RATIO
100
205 WT
670

CED	BW	WW	YW	MILK	\$EN
+8	-0.5	+43	+74	+20	+11

Heifer Bull: Double bred Juanada: Rugged made bull here and lined up a couple times to NBar 5522. Not to mention OCC Jetstream, Anchor and to top off the maternal goodness throw in Basin Q-Bar. That's a lot of great maternal genetics with Maternal Integrity in one package. Look up his full brother in the yearlings selling as well. Put them together for a consistent set of knock your socks off heifer calves. 103/BWR-102WWR

48**JBob Hunter 206**

TATTOO: 206 DOB: 03/05/22 AAA: 20859037

O C C Focus 813F
O C C Hunter 928H
 O C C Dixie Erica 960E

Basin Rainmaker 654X
 Dixie Erica of C H 1019
 O C C Anchor 771A
 Dixie Erica of R R 4345

BAA Classic of JBob 442
Hould Juanada 0155
 JJJ Juanadamere 6104

Rito 054 G D A R
 Cole Creek 104 Juanada 8M
 D D A Fahren 21X
 Cole Creek Juanadamere 588

BIRTH WT
72
BIRTH RATIO
103
205 WT
634

CED	BW	WW	YW	MILK	\$EN
+9	-0.9	+24	+46	+23	+21

Heifer Bull: This bull has Juanada 1450 and 6104 lined up on the bottom side. That alone should be evidence enough to predict that this bull will produce outstanding long lived functional females. And add Hunter and it's just the icing on the cake. 95/BWR-103/WWR

49**JBob Dominance 272**

TATTOO: 272 DOB: 03/27/22 AAA: 20859024

Emulation N Bar 5522 Emulation 31
 Ankony 8F78 Lass 8F275

JBob Emulation 767
 Hould Juanada 9021

O C C Anchor 771A
 Cole Creek 104 Juanada 8M

O C C Cortez 819C O C C Big Time 746Z
 O C C Dixie Erica 680W

Hould Juanada 8093
 J J J Juanada 1750 Emulation N Bar 5522
 Cole Creek 104 Juanada 8M

BIRTH WT	78
BIRTH RATIO	103
205 WT	611

CED	BW	WW	YW	MILK	\$EN
+9	-0.7	+47	+78	+17	+15

Heifer Bull: Double bred Juanada and Emulation 5522. This bugger is fancy to look at and knows it. Very moderate in size with an abundance of meat and muscle. If you're wanting 1200# cows in the future. Buy this bull and keep all his daughters. Mission accomplished. 103/BWR-95/WWR

50**JBob Fusion 295**

TATTOO: 295 DOB: 04/22/22 AAA: 20859034

O C C Tremendous 619T O C C Emblazon 854E
 O C C Dixie Erica 960H

CFC Fusion 8MT1
 Miss Wix 2022 HC Mc Cumber Leachman Right Time
 Miss Wix 7111 of Mc Cumber

Shoshone Ballard 628 GFAR Shoshone Porter 6113
 Miss Blackette 938 G F A R

BAA Forever 282B
 Forever 130 G F A R Shoshone Garth 1915 J O D
 Forever 97 G F A R

BIRTH WT	67
BIRTH RATIO	88
205 WT	670

CED	BW	WW	YW	MILK	\$EN
+11	-1.6	+37	+57	+19	+15

Heifer bull: This is a super stout Fusion son that should catch the attention of everyone come sale day. His mother is outstanding and came to us from the Broken Arrow Angus herd in Nebraska. Travis told me to buy this cow and I have never regretted having her around.

51**JBob Freightcar 200**

TATTOO: 200 DOB: 03/04/22 AAA: 20902375

GCC Hunter 649U O C C Hunter 928H
 O C C Juanada 862M

O C C Freightcar 655F
 O C C Dixie Erica 805Y O C C Jet Stream 825J
 O C C Dixie Erica 607P

O C C Jet Stream 825J O C C Emblazon 854E
 O C C Juanada 968G

Hould Juanada 8007
 J J J Juanadamere 6104 D D A Fahren 21X
 Cole Creek Juanadamere 588

BIRTH WT	78
BIRTH RATIO	105
205 WT	602

CED	BW	WW	YW	MILK	\$EN
+11	-0.3	+30	+50	+24	+21

Another stout made Freightcar son out of massive made Jetstream daughter. His mother 8007 is also a daughter of Juanada 6104 who has numerous progeny throughout this sale. Lots of great cattle in this bulls pedigree. 96/BWR- 101/WWR

52**JBob Hunter 218**

TATTOO: 218 DOB: 03/08/22 AAA: 20859030

O C C Focus 813F Basin Rainmaker 654X
 Dixie Erica of C H 1019

O C C Hunter 928H
 O C C Dixie Erica 960E O C C Anchor 771A
 Dixie Erica of R R 4345

BAA Classic of JBob 442 Rito 054 G D A R
 Cole Creek 104 Juanada 8M

Hould Juanada 0158
 Hould Juanada 2115 Jad Phylis W6157
 Hould Juanada 0202

BIRTH WT	80
BIRTH RATIO	113
205 WT	633

CED	BW	WW	YW	MILK	\$EN
+3	+1.6	+30	+55	+21	+19

Hunter has left us a bunch of heifers that show a lot of promise. This bulls mother stems from the Juanada 2115 cow and is maybe the most easy keeping daughter to date of the Classic bull. 2115 produced a line of cattle with that extra boost in production and remained very fertile and fleshy. 95/BWR-113/WWR

53**JBob Hunter 225**

TATTOO: 225 DOB: 03/09/22 AAA: Pending

O C C Focus 813F Basin Rainmaker 654X
 Dixie Erica of C H 1019

O C C Hunter 928H
 O C C Dixie Erica 960E O C C Anchor 771A
 Dixie Erica of R R 4345

G D A R Traveler 9161 D H D Traveler 6807
 G D A R Sapphire 728

Hould Juanada 5031
 Hould Juanada 0228 Emulation 31
 Cole Creek 104 Juanada 8M

BIRTH WT	78
BIRTH RATIO	101
205 WT	695

CED	BW	WW	YW	MILK	\$EN
+13	-2.1	25	46	25	20

Heifer Bull: Everyone that sees this bulls mother likes her. She has sired several bulls that have brought top dollar in our past sales. She is perfect in her design and backed by several generations of great cows including 0228 who is the mother to some of the flush brother who sell this year. I kept this bull back as a test to see how well the younger bulls would compete against these bulls with more mature proven mothers. That's why he is outside the age group parameters of the 2 yr old bulls. 96/BWR - 101/WWR

54**JBob Dominance 275**

TATTOO: 275 DOB: 04/01/22 AAA: 20902376

Emulation N Bar 5522 Emulation 31
 Ankony 8F78 Lass 8F275

JBob Emulation 767
 Hould Juanada 9021 O C C Anchor 771A
 Cole Creek 104 Juanada 8M

JBob Emulation 767 Emulation N Bar 5522
 Hould Juanada 9021

Hould Delia 9012
 Hould Delia 7231 L T Bandwagon 3105
 J J J Delia 8102

BIRTH WT	78
BIRTH RATIO	100
205 WT	612

CED	BW	WW	YW	MILK	\$EN
+10	-1.2	+45	+72	+21	+11

Heifer Bull: Double bred 767 son who will no doubt be a sleep all night heifer bull. This bulls mother has a picture perfect udder and stems from the 16 year old Rito 707 daughter that still resides here and will calve again first cycle. This bull will make daughters that will last till their teens. 100/BWR-101/WWR

55**JBob Jockey 204**

TATTOO: 204 DOB: 03/04/22 AAA: 20590277

O C C Anchor 771A
O C C Juanada 709V**O C C Jockey 655J**O C C Dixie Erica 907C
N Bar Emulation EXT
Dixie Erica of C H 1019Emulation N Bar 5522
Emulation 31
Ankony 8F78 Lass 8F275**J J J Juanada 1650**Cole Creek 104 Juanada 8M
C H Quantum 3330
Cole Creek 104 Juanada 1256

BIRTH WT	78
BIRTH RATIO	100
205 WT	605

CED	BW	WW	YW	MILK	\$EN
+8	-0.3	+26	+49	+20	+19

Heifer Bull- Last year this bulls full brothers where some of the high sellers. This bull is a full brother to our herd sire JBob Juggernaut. Jockey has been used very successfully in Argentina and very few Jockey calves have been born in America. This is an excellent opportunity to acquire sons of Jockey and Juanada 1650 who is building a foundation of females here that are sure to be our foundation for the future. This bull was offered last year but when he got home for the sale. He was rode to the point I had to pull him from sale. He will make a great heifer bull but needs a little extra space as he does have a wider flight zone. 94/BWR-105/WWR

56**JBob Emulation 284**

TATTOO: 284 DOB: 04/05/22 AAA: 20597837

Emulation N Bar 5522
Emulation 31
Ankony 8F78 Lass 8F275**JBob Emulation 767**Hould Juanada 9021
O C C Anchor 771A
Cole Creek 104 Juanada 8M

O C C Big Time 746Z

Hould Juanada 8041Hould Juanada 3122
O C C Rear End 751R
O C C Dixie Erica 771R
Horse Butte 6143 of 7143
JJJ Juanada 9150

BIRTH WT	70
BIRTH RATIO	91
205 WT	703

CED	BW	WW	YW	MILK	\$EN
+9	-0.7	+52	+81	+21	+3

Another outstanding 767 x OCC Big Time bull. These 767 are really working well on this cross. Also this is another one of those outstanding Big Time daughters. Big Time is for real and is making range cows that can get it done. This bulls mother is no exception. Check out his full brother in the yearlings. 12/BWR-108/WWR

57**JBob Dominance 290**

TATTOO: 290 DOB: 04/16/22 AAA: 20859023

Emulation N Bar 5522
Emulation 31
Ankony 8F78 Lass 8F275**JBob Emulation 767**Hould Juanada 9021
O C C Anchor 771A
Cole Creek 104 Juanada 8MJ Bob Montana Q-Bar 305
Basin Q Bar 163
Cole Creek 104 Juanada 8M**Hould Juanda 9056**Hould Juanada 3104
Horse Butte 6143 of 7143
JJJ Juanadamere 6104

BIRTH WT	76
BIRTH RATIO	101
205 WT	713

CED	BW	WW	YW	MILK	\$EN
+7	+1	+43	+72	+21	+8

Double bred Juanada 1450 with a shot of 6104 thrown in for good measure. This bulls Montana mother is a top end kind of cow and knows how to get the job done in good fashion. This bull will make those replacements that will make your neighbors start talking. HAHAHA!102/BWR-102/WWR

58**JBob Dominance 298**

TATTOO: 298 DOB: 04/23/22 AAA: 20859038

Emulation N Bar 5522
Emulation 31
Ankony 8F78 Lass 8F275**JBob Emulation 767**Hould Juanada 9021
O C C Anchor 771A
Cole Creek 104 Juanada 8M

O C C Jet Stream 825J

Hould Juanada 8031Hould Juanada 4350
O C C Emblazon 854E
O C C Juanada 968G
Rito 054 G D A R
Cole Creek 104 Juanada 8M

BIRTH WT	68
BIRTH RATIO	88
205 WT	654

CED	BW	WW	YW	MILK	\$EN
+12	-1.6	+38	+63	+22	+16

Heifer Bull: Double Bred Juanada. Pay Attention, 767 x Jetstream x Classics full sister. You will have to look long and hard to find a Jetstream daughter much better than this bull mother. She will have a OCC Remarkabull bull calf this year that just might not be leaving the ranch. I don't know how I could write a better pedigree. 98/BWR-102/ WWR

59**JBob Fusion 299**

TATTOO: 299 DOB: 04/26/22 AAA: 20859026

O C C Tremendous 619T
O C C Emblazon 854E
O C C Dixie Erica 960H**CFC Fusion 8MT1**Miss Wix 2022 HC Mc Cumber
Leachman Right Time
Miss Wix 7111 of Mc CumberR R Rito 707
Rito N Bar
Eriskay of Rollin Rock 3**JJJ Delia 8102**Octoraro Delia 151
Fabron of Wye
Octoraro Delia 503

BIRTH WT	78
BIRTH RATIO	96
205 WT	768

CED	BW	WW	YW	MILK	\$EN
+10	-1.6	+53	+79	+19	+14

Old School genetics wrapped up in this package. His brother sells in the yearlings. So put the two gather and make a set of heifers for the future. Every year she has a bull I say the same thing. Pound for pound this Rito 707 daughter will out do any of the other cows. She is now 16 yrs old and will calve first cycle. Productive and long lived. Two traits that are hard to come by anymore in mainstream Angus. 101/BWR-100/WWR



**DELIA 8102 - MOTHER OF LOTS 38 AND 59
GRANDMOTHER OF LOT**

60

JBob Dominance 263

TATTOO: 263 DOB: 03/23/22 AAA: 20859035

Emulation N Bar 5522 Emulation 31
Ankony 8F78 Lass 8F275
JBob Emulation 767
Hould Juanada 9021 O C C Anchor 771A
Cole Creek 104 Juanada 8M

Sinclair Emulation 5522 XP Emulation N Bar 5522
N Bar Primrose Y3051
Hould Marshall Queen 9019
Hould Marshall Queen 4308 O C C Jet Stream 825J
SCC Marshall Queen C723

CED	BW	WW	YW	MILK	\$EN
+11	-1.3	+37	+62	+20	+18

BIRTH WT	68
BIRTH RATIO	91
205 WT	638

Heifer Bull: Lined up to the bull that I feel is the greatest producer of range adaptable cattle in the breed. This bigger outlined 767 son will get his job done and will always be in great condition while doing it. His mother and Grandmother are great cows phenotypically with strong udders and fertile. 88/BWR-98/WWR



WEANING CREW 2023

61

JBob Dominance 253

TATTOO: 253 DOB: 03/17/22 AAA: 20859027

Emulation N Bar 5522 Emulation 31
Ankony 8F78 Lass 8F275
JBob Emulation 767
Hould Juanada 9021 O C C Anchor 771A
Cole Creek 104 Juanada 8M

Sinclair Pioneer 1RF1 PBC 707 1M F0203
N Bar Miss Emulous A404
BA Ranch Blackcap 13G
Milk River Blackcap 0376 O C C Great Plains 943G
BHA Miss Anchor 371

CED	BW	WW	YW	MILK	\$EN
+13	-2.4	+36	+61	+19	+20

BIRTH WT	70
BIRTH RATIO	94
205 WT	623

Heifer bull: I purchased this bulls mother from Nate Baltrush as a yearlings. His Grand Mother was one of my favorite cows a Milk River. This bulls mother is perfect uddered and has that range cow look to her. This bull will cover country and produce a heifer calf crop that your neighbors will be envious of. 99/BWR-90/WWR

62

JBob Dominance 297

TATTOO: 297 DOB: 04/23/22 AAA: 20859033

Emulation N Bar 5522 Emulation 31
Ankony 8F78 Lass 8F275
JBob Emulation 767
Hould Juanada 9021 O C C Anchor 771A
Cole Creek 104 Juanada 8M

O C C Big Time 746Z O C C Rear End 751R
O C C Dixie Erica 771R
Hould Juanada 8061
Hould Juanada 3120 Horse Butte 6143 of 7143
JJJ Juanada 8108

CED	BW	WW	YW	MILK	\$EN
+5	+1.2	+59	+98	+18	-2

BIRTH WT	80
BIRTH RATIO	104
205 WT	766

767 x OCC Big Time strikes again. Lots of phenotype and style in this bigger outlined bull. His mother is exceptional in her type and is very productive and fertile. 101/BWR-107/WWR

63

JBob Hunter 232

TATTOO: 232 DOB: 03/11/22 AAA: 20859028

O C C Focus 813F Basin Rainmaker 654X
Dixie Erica of C H 1019
O C C Hunter 928H
O C C Dixie Erica 960E O C C Anchor 771A
Dixie Erica of R R 4345

O C C Cortez 819C O C C Big Time 746Z
O C C Dixie Erica 680W
Hould Blackbird 0161
NCC Blackbird 503 Basin Rainmaker F156
O C C Blackbird 736K

CED	BW	WW	YW	MILK	\$EN
+6	+0	+32	+56	+19	+23

BIRTH WT	76
BIRTH RATIO	108
205 WT	602

Heifer Bull: He will definitely make a set of moderate and fancy set of females. These Hunter sons are hard to come by. This bulls mother is outstanding in phenotype and structure. 102/BWR-90/WWR

64

JBob Dominance 285

TATTOO: 285 DOB: 04/05/22 AAA: 20859031

Emulation N Bar 5522 Emulation 31
Ankony 8F78 Lass 8F275
JBob Emulation 767
Hould Juanada 9021 O C C Anchor 771A
Cole Creek 104 Juanada 8M

O C C Cortez 819C O C C Big Time 746Z
O C C Dixie Erica 680W
Hould Juanada 9034
Hould Juanada 3150 Wandering CRK Dynasty JRM 2F
Cole Creek 104 Juanada 8M

CED	BW	WW	YW	MILK	\$EN
+13	-2.9	+38	+60	+18	+20

BIRTH WT	61
BIRTH RATIO	82
205 WT	622

Heifer Bull: Double bred Juanada. If you look at this bulls pedigree it's not hard to figure out that it is stacked with old proven time tested maternal genetics. This bulls mom has a very fancy phenotype and a beautiful udder. 92/BWR-97/WWR

65**JBob Classic 287**

TATTOO: 287 DOB: 04/09/22 AAA: 20902377

Rito 054 G D A R
C S U Rito 4114
Blackcap Forever 485 G D A R**BAA Classic of JBob 442**Cole Creek 104 Juanada 8M
C H Quantum 3330
Cole Creek 104 Juanada 1256N Bar Emulation EXT
Emulation N Bar 5522
N Bar Primrose 2424**JJJ Juanada 9150**Cole Creek 104 Juanada 8M
C H Quantum 3330
Cole Creek 104 Juanada 1256

CED	BW	WW	YW	MILK	\$EN
+11	-1.6	+31	+57	+27	+9

BIRTH WT
72
BIRTH RATIO
89
205 WT
648

Heifer Bull: Half brother/Half sister mating here. I believe that he is showing a little bit of Linebred regression. But if you are breeding him too cows that are of no relation to Juanada 1450 you will get a genetic kick that will make big stout calves and daughters that will work their tails off for you. 96/BWR-106/WWR

66**Ginger Hill Black Bore 2421**

TATTOO: 2421 DOB: 9/8/2022 AAA: 20561737

Cole Creek Black Bore 572
Cole Creek Full Bore 730
Cole Creek Juanada 92T**Ginger Hill Black Bore 616**Ginger Hill Dawn 270
Ginger Hill Treasure 804
Ginger Hill Dawn 793

Shoshone Lawrence 840

Jad Prudence 4217Shoshone Prudence 6157
Shoshone Lobo 884
Shoshone Lucy 840

CED	BW	WW	YW	MILK	\$EN
+4	+9	+32	+60	+26	+10

BIRTH WT
N/A
BIRTH RATIO
N/A
205 WT
N/A

This young fall born bull came along side a cow a bought out of the Ginger Hill program. His mother has the genetics I wanted to bring into our herd for many years. And the opportunity arose and I took it. Very satisfied with her and we will have several ET calves out of her by Emulation 5522 and Sinclair's XP this spring. He really likes being a bull. 112/BWR-100/WWR

WHAT'S IT COSTING YOUR COWHERD TO PARALLEL THE MANAGEMENT OF YOUR SEEDSTOCK SUPPLIER? - REID SPENCER

This is something that I have been trying to put together in my head for a couple years. I have never been able to get it put together so eloquently as Reid did. But this here is absolutely correct and maybe one of the reason for such a train wreck lately with opens in cow herds in every direction. Just my opinion.

SALE HEIFERS

The sale heifers are a cross section of the 86 heifer calves we retained. Some will be out of our newer genetics and many will be from our good old tried and true mother cows. Irregardless they will make outstanding cows to add to your herd or start your own registered herd. The heifers were weaned and put out on meadows until around January 1. At that point they got free choice oat hay and mineral. Around February 1, I sorted off the sale heifers and they have been getting free choice Grass/alfalfa hay and 1.5 lbs of cracked corn and a 21% protein pellet. I'm not going to apologize for what they look like. They have been grown out healthy and will hit green grass and breed up immediately. We had 78 heifers last year and we had 1 open. So I know that they will respond very well for their new owners. It's very hard to sell a few of these heifers but I would like to give you all a shot at them.



OCC WESTWARD 993W
SIRE TO SEVERAL SALE HEIFERS



MOTHER TO HEADSTART

67**Hould Juanada 3006**

TATTOO: 3006 DOB: 03/10/23 AAA: 20881285

- O C C Sentinel 714S
- O C C Focus 813F
- O C C Blackcap 804M
- O C C Westward 993W**
- O C C Dixie Erica 837T
- O C C Great Plains 943G
- O C C Dixie Erica 807R

Sinclair Emulation 5522 XP Emulation N Bar 5522
 N Bar Primrose Y3051

Hould Juanada 1008

Hould Juanada 5041 G D A R Traveler 9161
 J J J Juanada 1550

CED	BW	WW	YW	MILK	\$EN
+5	+4	+36	+71	+21	+14

BIRTH WT	74
BIRTH RATIO	112
205 WT	512

68**Hould Juanada 3008**

TATTOO: 3008 DOB: 03/10/23 AAA: 20881300

- O C C Sentinel 714S
- O C C Focus 813F
- O C C Blackcap 804M
- O C C Westward 993W**
- O C C Dixie Erica 837T
- O C C Great Plains 943G
- O C C Dixie Erica 807R

JBob Genetic Rustler 440 Horse Butte 6143 of 7143
 Hould Juanada 9021

Hould Juanada 1069

Hould Juanada 4303 JBob Focal Point 222
 Hould Juanada 2111

CED	BW	WW	YW	MILK	\$EN
+7	-0.1	+45	+83	+23	+5

BIRTH WT	78
BIRTH RATIO	113
205 WT	524

69**Hould Delia 3011**

TATTOO: 3011 DOB: 03/11/23 AAA: 20881286

- O C C Eureka 865E
- O C C Backstop 888B
- Blackbird of R R 1204
- O C C Thumper 819T**
- O C C Dixie Erica 954K
- O C C Anchor 771A
- O C C Dixie Erica 907C

L T Bandwagon 3105 Leachman Right Time
 L T Ms Vikings Value 0256

Hould Delia 7221

Octoraro Delia 933 Octoraro Ritulation 2503
 Octoraro Delia 860

CED	BW	WW	YW	MILK	\$EN
-1	+3.7	+38	+67	+22	+6

BIRTH WT	88
BIRTH RATIO	114
205 WT	593

70**Hould Katherines Lass 3025**

TATTOO: 3025 DOB: 03/17/23 AAA: 20881287

- O C C Big Time 746Z
- O C C Rear End 751R
- O C C Dixie Erica 771R
- O C C Confidence 820C**
- O C C Dixie Erica 628W
- O C C Practical 841P
- Chloe Dixie Erica 7313

JBob Focal Point 222 O C C Focus 813F
 O C C Dixie Erica 778J

Hould Katherines Lass 6041

W C R Katherines Lass 7031 High Valley 4C6 Ambush
 W C R Katherines Lass 69

CED	BW	WW	YW	MILK	\$EN
+5	+1.4	+37	+69	+22	+15

BIRTH WT	81
BIRTH RATIO	105
205 WT	579

71**Hould Juanada 3033**

TATTOO: 3033 DOB: 03/21/23 AAA: 20881288

- O C C Headliner 661H
- O C C Emblazon 854E
- O C C Juanada 858F
- O C C Head Start 683H**
- O C C Pollyanna 805C
- O C C Sentinel 714S
- O C C Pollyanna 744Y

Duff Honcho 426 Bar Wick Eureka 943 310
 Duff BI 619 LadyPop 1017

Hould Juanada 0112

JJJ Juanada 6116 D D A Fahren 21X
 Cole Creek 104 Juanada 8M

CED	BW	WW	YW	MILK	\$EN
+9	-1.1	+36	+62	+21	+20

BIRTH WT	74
BIRTH RATIO	101
205 WT	513

72**Hould Juanada 3034**

TATTOO: 3034 DOB: 03/22/23 AAA: 20881289

- O C C Headliner 661H
- O C C Emblazon 854E
- O C C Juanada 858F
- O C C Head Start 683H**
- O C C Pollyanna 805C
- O C C Sentinel 714S
- O C C Pollyanna 744Y

O C C Best Yet 766B O C C Work of Art 766W
 O C C Dixie Erica 817Y

Hould Juanada 0119

Hould Juanada 3104 Horse Butte 6143 of 7143
 JJJ Juanadamere 6104

CED	BW	WW	YW	MILK	\$EN
+3	+1.7	+40	+72	+21	+15

BIRTH WT	82
BIRTH RATIO	110
205 WT	573

73**Hould Clova Pride 3035**

TATTOO: 3035 DOB: 03/23/23 AAA: 20881290

- O C C Headliner 661H
- O C C Emblazon 854E
- O C C Juanada 858F
- O C C Head Start 683H**
- O C C Pollyanna 805C
- O C C Sentinel 714S
- O C C Pollyanna 744Y

O C C Best Yet 766B O C C Work of Art 766W
 O C C Dixie Erica 817Y

Hould Clova Pride 0117

S Clova Pride 263 GDAR Game Day 449
 Basin Clova Pride 933L

CED	BW	WW	YW	MILK	\$EN
+5	+6	+48	+85	+24	+8

BIRTH WT	79
BIRTH RATIO	108
205 WT	533

74**Hould Juanada 3039**

TATTOO: 3039 DOB: 03/25/23 AAA: 20881291

- O C C Headliner 661H
- O C C Emblazon 854E
- O C C Juanada 858F
- O C C Head Start 683H**
- O C C Pollyanna 805C
- O C C Sentinel 714S
- O C C Pollyanna 744Y

Horse Butte 6143 of 7143 Horse Butte 1116 of 3116
 HBR Shoshone Ester 7143

Hould Juanada 0131

Hould Juanada 4313 O C C Jet Stream 825J
 JJJ Juanada 8104

CED	BW	WW	YW	MILK	\$EN
+7	-0.4	+38	+64	+22	+16

BIRTH WT	72
BIRTH RATIO	97
205 WT	598

75**Hould Lady 3040**

TATTOO: 3040 DOB: 03/26/23 AAA: 20881292

O C C Headliner 661H
O C C Head Start 683H
 O C C Pollyanna 805C

O C C Emblazon 854E
 O C C Juanada 858F
 O C C Sentinel 714S
 O C C Pollyanna 744Y

CFC Cornerstone M71
Hould Lady 0150
 Hould Lady 8029

C C A Emblazon 702
 Miss Wix 2022 HC Mc Cumber

O C C Jet Stream 825J
 Brusett Black Lady Z25

CED	BW	WW	YW	MILK	\$EN	BIRTH WT 67
+11	-1.4	+41	+72	+19	+13	
						205 WT 549

76**Hould Juanada 3051**

TATTOO: 3051 DOB: 04/04/23 AAA: 20881294

O C C Tremendous 619T
CFC Fusion 8MT1
 Miss Wix 2022 HC Mc Cumber

O C C Emblazon 854E
 O C C Dixie Erica 960H
 Leachman Right Time
 Miss Wix 7111 of Mc Cumber

G D A R Traveler 9161
Hould Juanada 5041
 J J J Juanada 1550

D H D Traveler 6807
 G D A R Sapphire 728
 Basin Q Bar 163
 Cole Creek 104 Juanada 8M

CED	BW	WW	YW	MILK	\$EN	BIRTH WT 81
+11	-0.8	+42	+71	+27	+10	
						205 WT 580

77**Hould Juanada 3053**

TATTOO: 3053 DOB: 04/07/23 AAA: 20881293

O C C Tremendous 619T
CFC Fusion 8MT1
 Miss Wix 2022 HC Mc Cumber

O C C Emblazon 854E
 O C C Dixie Erica 960H
 Leachman Right Time
 Miss Wix 7111 of Mc Cumber

O C C Jet Stream 825J
FairView Juanada 4032
 FairView Juanada 2290

O C C Emblazon 854E
 O C C Juanada 968G
 Basin Rainmaker 814Z
 Cole Creek 104 Juanada 8M

CED	BW	WW	YW	MILK	\$EN	BIRTH WT 61
+16	-3.7	+41	+68	+25	+10	
						205 WT 580

78**Hould Juanada 3056**

TATTOO: 3056 DOB: 04/01/23 AAA: 20881295

O C C Tremendous 619T
CFC Fusion 8MT1
 Miss Wix 2022 HC Mc Cumber

O C C Emblazon 854E
 O C C Dixie Erica 960H
 Leachman Right Time
 Miss Wix 7111 of Mc Cumber

J Bob Emulation 250
Hould Juanada 5950
 Hould Juanada 3950

Emulation N Bar 5522
 Cole Creek 104 Juanada 8M
 Basin Rainmaker 814Z
 Cole Creek 104 Juanada 8M

CED	BW	WW	YW	MILK	\$EN	BIRTH WT 63
+16	-3.7	+47	+80	+25	+0	
						205 WT 577

79**Hould Juanada 3057**

TATTOO: 3057 DOB: 04/05/23 AAA: 20881296

O C C Headliner 661H
O C C Head Start 683H
 O C C Pollyanna 805C

O C C Emblazon 854E
 O C C Juanada 858F
 O C C Sentinel 714S
 O C C Pollyanna 744Y

Duff Honcho 426
Hould Juanada 0111
 J J J Juanada 1850

Bar Wick Eureka 943 310
 Duff BI 619 LadyPop 1017
 Emulation N Bar 5522
 Cole Creek 104 Juanada 8M

CED	BW	WW	YW	MILK	\$EN	BIRTH WT 68
+10	-1.8	+38	+62	+22	+18	
						205 WT 510

80**Hould Juanada 3061**

TATTOO: 3061 DOB: 04/22/23 AAA: 20881297

O C C Headliner 661H
O C C Head Start 683H
 O C C Pollyanna 805C

O C C Emblazon 854E
 O C C Juanada 858F
 O C C Sentinel 714S
 O C C Pollyanna 744Y

O C C Best Yet 766B
Hould Juanada 0106
 Hould Juanada 6003

O C C Work of Art 766W
 O C C Dixie Erica 817Y
 Sinclair Emulation 5522 XP
 JJJ Juanada 8108

CED	BW	WW	YW	MILK	\$EN	BIRTH WT 78
+5	+7	+44	+79	+21	+10	
						205 WT 639

81**Hould Juanada 3063**

TATTOO: 3063 DOB: 04/02/23 AAA: 20881298

O C C Headliner 661H
O C C Head Start 683H
 O C C Pollyanna 805C

O C C Emblazon 854E
 O C C Juanada 858F
 O C C Sentinel 714S
 O C C Pollyanna 744Y

O C C Cortez 819C
Hould Juanda 9026
 Hould Juanada 6005

O C C Big Time 746Z
 O C C Dixie Erica 680W
 CAR Chinnook 786
 JJJ Juanada 9025

CED	BW	WW	YW	MILK	\$EN	BIRTH WT 80
+7	+4	+40	+70	+19	+20	
						205 WT 577

82**Hould Juanada 3064**

TATTOO: 3064 DOB: 05/01/23 AAA: 20881299

O C C Tremendous 619T
CFC Fusion 8MT1
 Miss Wix 2022 HC Mc Cumber

O C C Emblazon 854E
 O C C Dixie Erica 960H
 Leachman Right Time
 Miss Wix 7111 of Mc Cumber

G D A R Traveler 9161
Hould Juanada 5029
 JJJ Juanadamere 6104

D H D Traveler 6807
 G D A R Sapphire 728
 D D A Fahren 21X
 Cole Creek Juanadamere 588

CED	BW	WW	YW	MILK	\$EN	BIRTH WT 60
+17	-3.9	+37	+64	+25	+16	
						205 WT 593

CATTLE WITH
*Maternal
Performance*



GENETICS WITH
*Maternal
Integrity*

COLE CREEK JUANADA 1450 (8M)

The matriarch of our herd. Most females on the ranch will have her in there pedigree at least once. And many will have her several times in there pedigree. I will continue to line breed this cow into every cow on the ranch through sons and grandsons.



Juanada 1650



Juanada 1750



Juanada 4313



Juanada 1850



Juanada 7267



Juanada 9021



Juanada 6104



Juanada 4310

NEW ADDITIONS

Miss Wix 2022 is the dam to our herd sires Fusion and Cornerstone. After the success we have had with both Fusion and Cornerstone, we decided to purchase the full sisters of both sires.



Miss Wix 2022



CCA Emblazon 702 X Miss Wix 2022

OCC Blackbird 736K is the dam to OCC Paxton as well as our new addition, NCC Blackbird 3035, who is the full sister to OCC Paxton. We also have several other daughters of OCC Blackbird 736K that reside here.



OCC Blackbird 736K



NCC Blackbird 3035

OCC Dixie Erica 628W is the dam of our new herd sire OCC Freedom 801F and AI sire OCC Confidence. She is also the dam of OCC Zodiac and Blueprint.



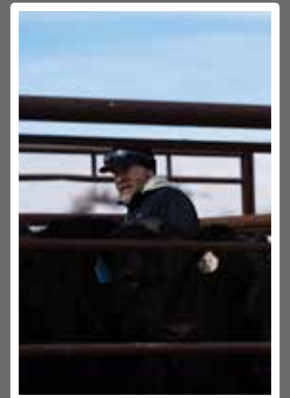
OCC Dixie Erica 628W



OCC Freedom 801F



Sale Day 2023





THANK YOU

FOR CO-SPONSORING OUR SALE LUNCH



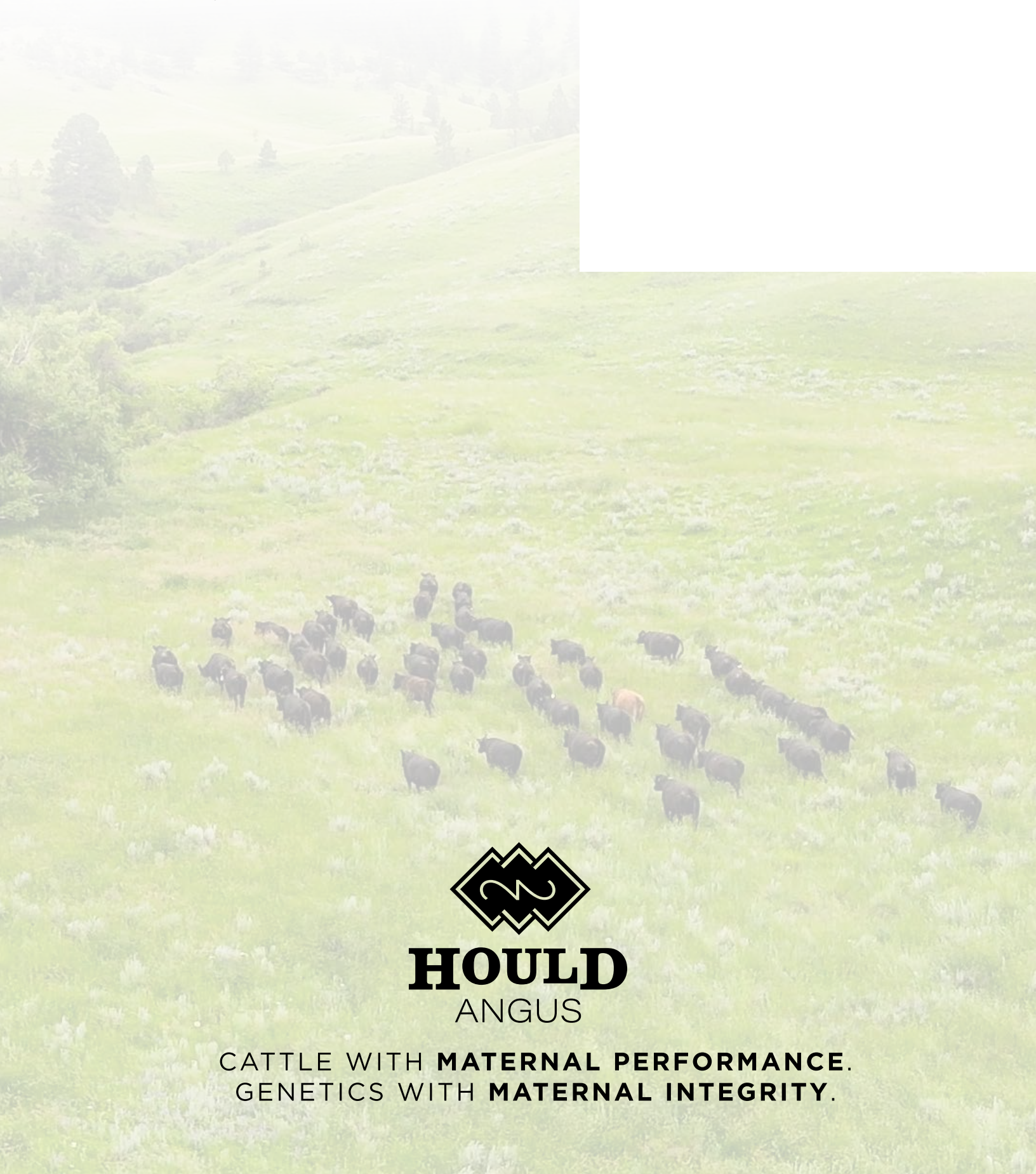
Independence
BANK

406-265-6666
www.ibyourbank.com

Agricultural Loans | Operating Lines of Credit
Agriculture Real Estate Loans | Equipment Loans
Livestock Purchases | Farm Service Agency Guaranteed Loans



58921 DAVEY RD
HAVRE MT 59501



HOULD
ANGUS

CATTLE WITH **MATERNAL PERFORMANCE.**
GENETICS WITH **MATERNAL INTEGRITY.**